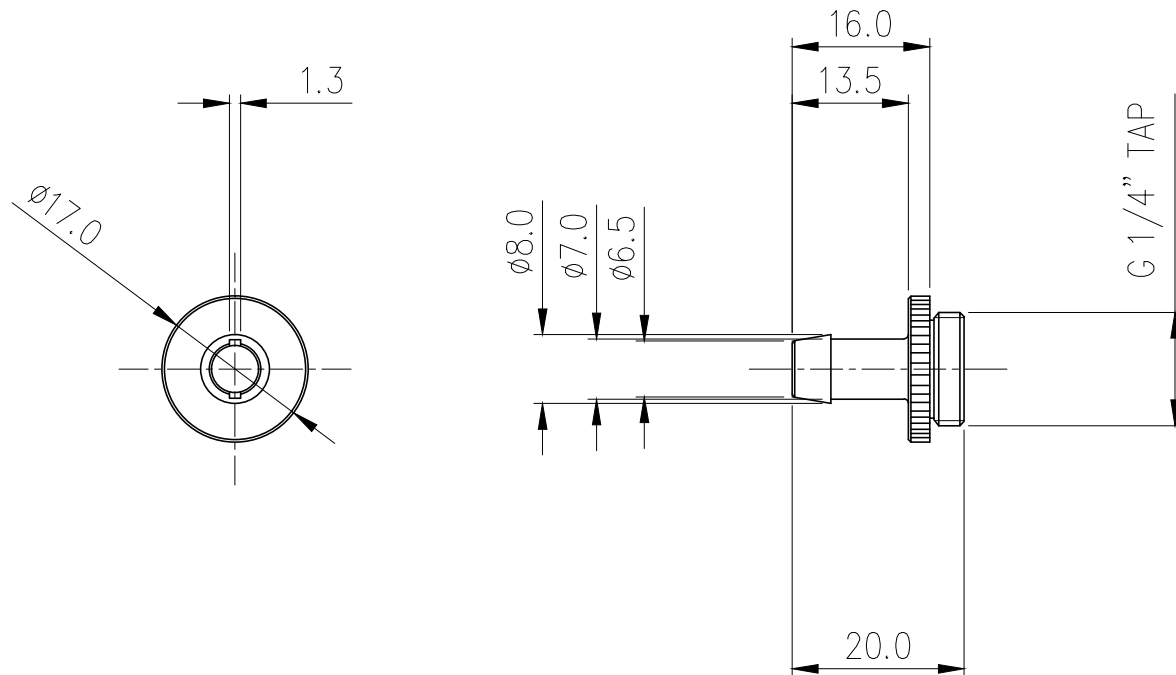





Single hose barb fitting for 1/4in (6mm) ID tubing. G 1/4 BSPP (parallel) thread. Includes hose clamp for 3/8in (10mm) OD tubing.

General	
Weight	0.05 lb (0.02 kg)
Fitting Thread	G 1/4 BSPP
Max Pressure Tolerance @ 25° C	15kgf/cm2 (213.4psi)
Max Temperature Tolerance	120° C (248° F)
Wetted Materials	Brass, EPDM



NO.		DESCRIPTION				MATER'L		QUANTITY	REMARKS
		BY	BY	BY	BY	UNIT	MM	APPAR	NZL-V06B(-BK)
		DATE				SCALE	N/S	TITLE	
04/21/2017		S.J.LEE				3RD ANGLE		Ass'y	
						CODE NO.		DWG. NO.	