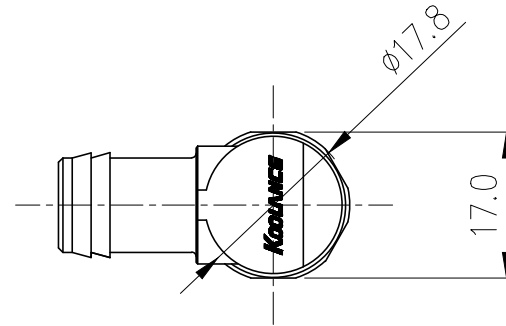
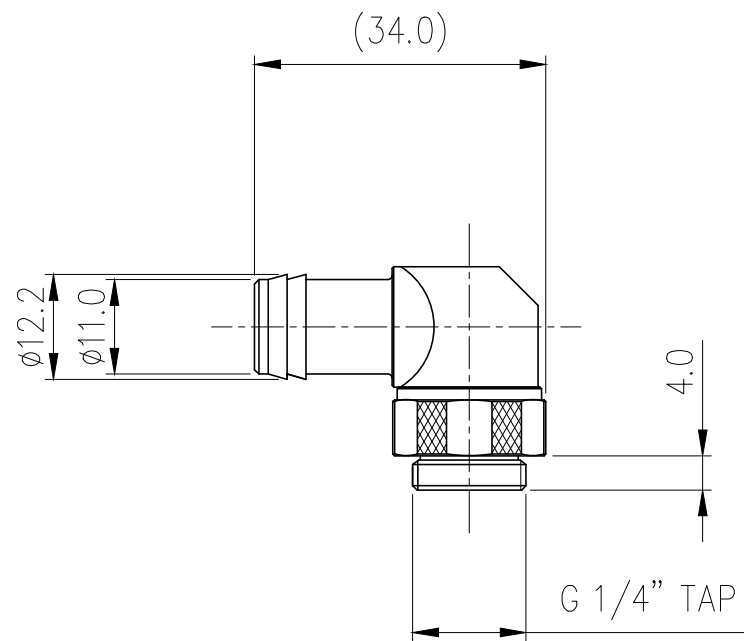
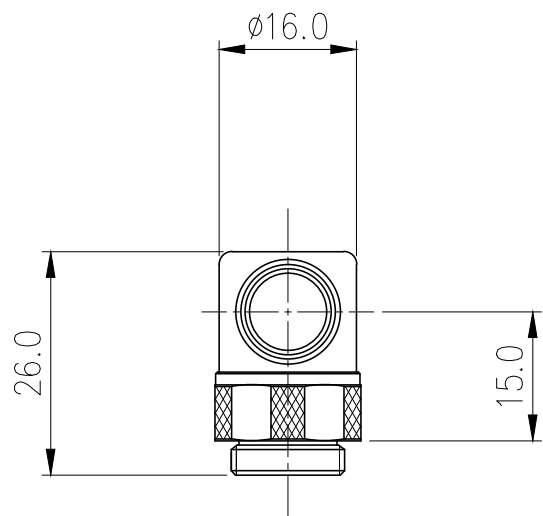



Rotary Elbow Barb Fitting for ID 10mm (3/8in)
Black, G 1/4 BSPP



Single rotational angled fitting barb for 3/8in (10mm) ID tubing. G 1/4 BSPP (parallel) thread. Made of brass and includes spring clamp.

General	
Weight	0.08 lb (0.04 kg)
Fitting Thread	G 1/4 BSPP
Max Pressure Tolerance @ 25°C	8kgf/cm2 (113.8psi)
Max Temperature Tolerance	100°C (212°F)
Wetted Materials	Brass, EPDM



NO.		DESCRIPTION			MATER'L		QUANTITY		REMARKS	
					UNIT		MM		APPAR NZL-L10B(-BK)	
					SCALE		N/S		TITLE Ass'y	
DATE		BY	BY	BY	APPRO BY	3RD ANGLE				
04/13/2017		S.J.LEE				CODE NO.		DWG. NO.		