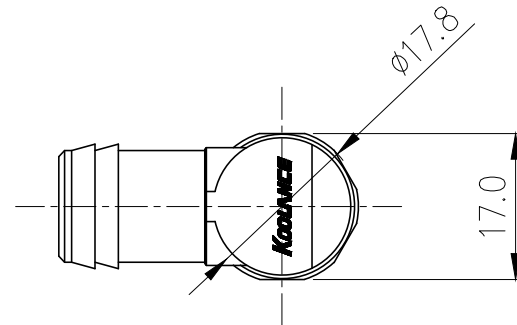
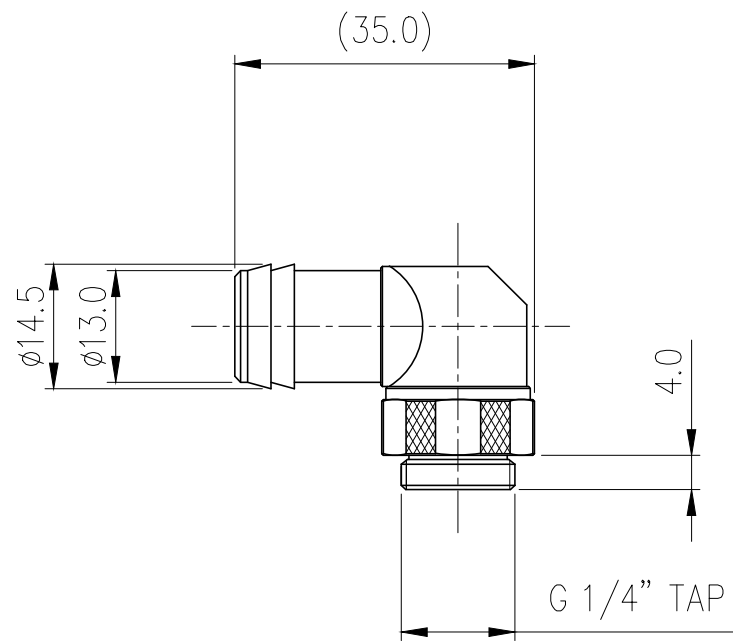
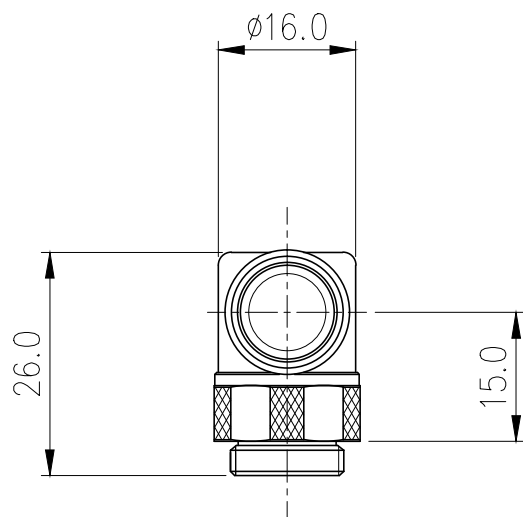


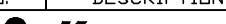
Rotary Elbow Barb Fitting for ID 13mm (1/2in)  
\*Black\*, G 1/4 BSPP



Single rotational angled fitting barb for 1/2in (13mm) ID tubing. G 1/4 BSPP (parallel) thread. Hose clamp included for 5/8in (16mm) OD tubing.

General	
Weight	0.09 lb (0.04 kg)
Fitting Thread	G 1/4 BSPP
Max Pressure Tolerance @ 25°C	8kgf/cm2 (113.8psi)
Max Temperature Tolerance	100°C (212°F)
Wetted Materials	Brass, EPDM



NO.		DESCRIPTION				MATER'L		QUANTITY	REMARKS
						UNIT	MM	APPAR	NZL-L13B(-BK)
						SCALE	N/S	TITLE	
DATE		BY	BY	BY	APPRO BY	3RD ANGLE		Ass'y	
04/13/2017		S.J.LEE				CODE NO.		DWG. NO.	