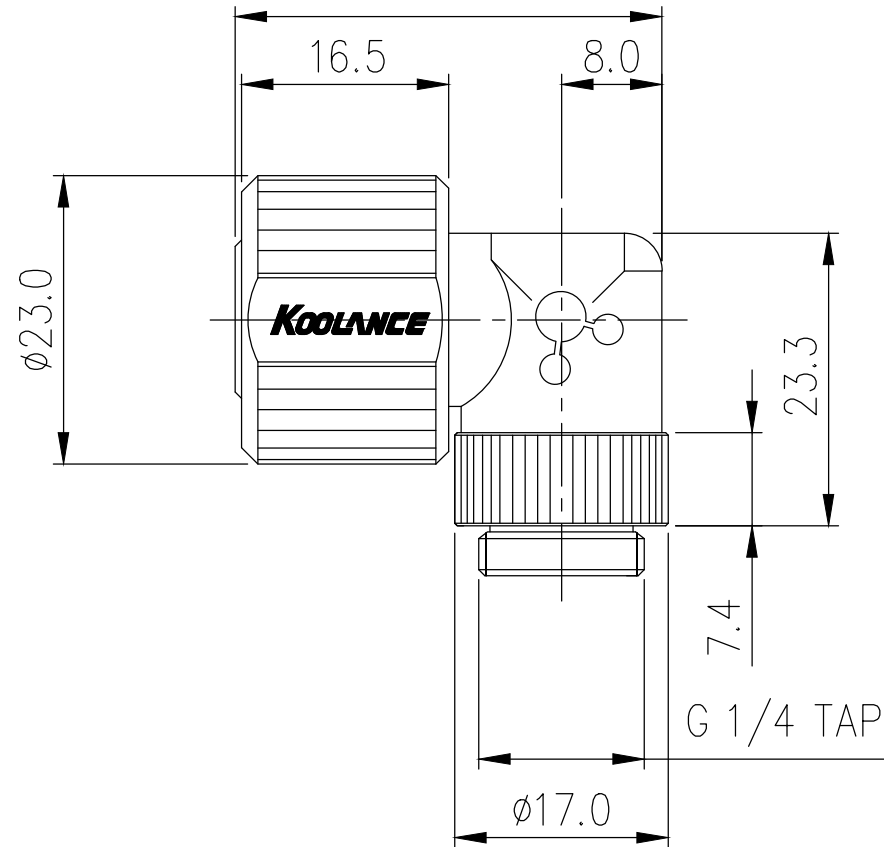
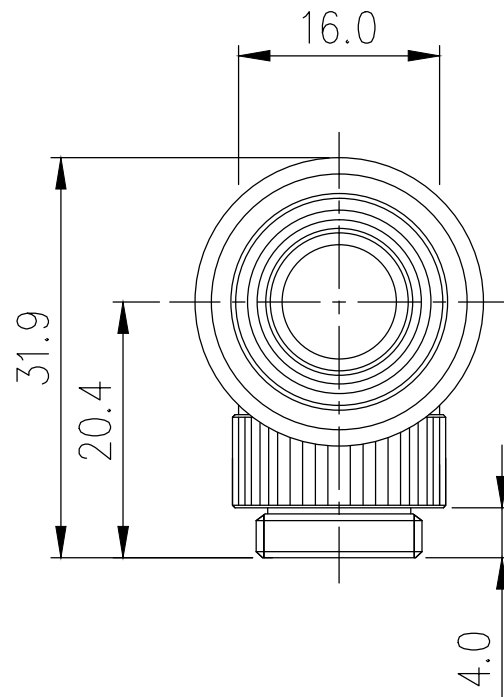



Rotary Elbow Compression Fitting for 13mm x  
16mm (1/2in x 5/8in) \*Black\*, G 1/4 BSPP



Single rotational angled fitting for 1/2in (13mm) ID, 5/8in (16mm) OD tubing. G 1/4 BSPP (parallel) thread.

General	
Weight	0.13 lb (0.06 kg)
Fitting Thread	G 1/4 BSPP
Max Pressure Tolerance @ 25°C	8kgf/cm2 (113.8psi)
Max Temperature Tolerance	100°C (212°F)
Wetted Materials	Brass, EPDM



NO.	DESCRIPTION				MATER'L		QUANTITY	REMARKS
					UNIT	MM	PART NO. NZL-L13(-BK)	
	BY	BY	BY	APPRO BY	SCALE	N/S	TITLE  Ass'y	
DATE					3RD ANGLE			
	S.J.LEE				DWG. NO.		ITEM	