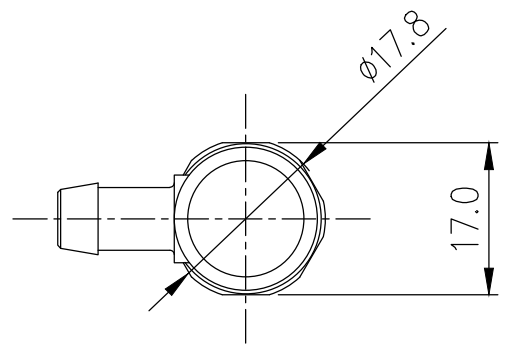
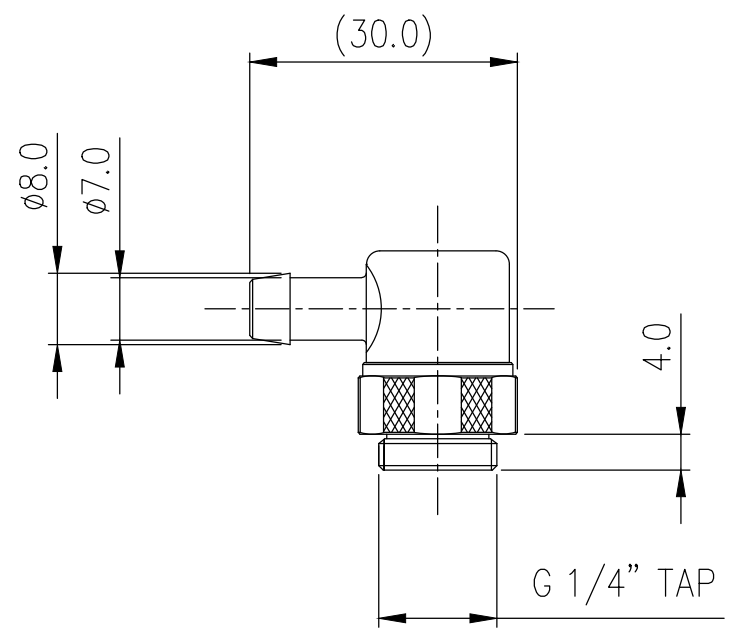
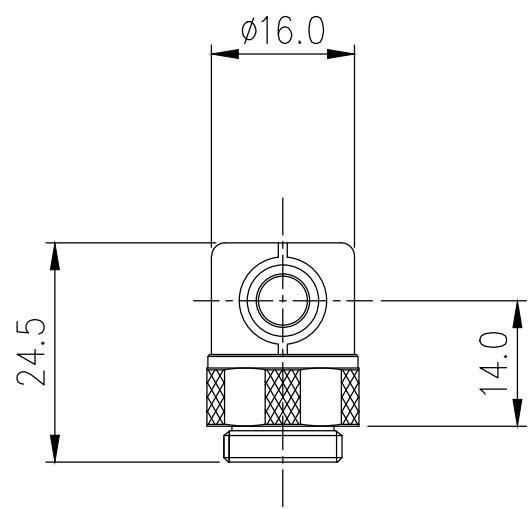


Rotary Elbow Barb Fitting for ID 06mm (1/4in),
G 1/4 BSPP



Single rotational angled fitting barb for 1/4in (6mm) ID tubing.
G 1/4 BSPP (parallel) thread.

| General | |
|--------------------------------|-----------------------------|
| Weight | 0.07 lb (0.03 kg) |
| Fitting Thread | G 1/4 BSPP |
| Materials | Brass, Nickel Plating, EPDM |
| Max Pressure Tolerance @ 25° C | 8kgf/cm2 (113.8psi) |
| Max Temp. Operating Tolerance | 100° C (212° F) |



| NO. | DESCRIPTION | | | | MATER'L | | QUANTITY | REMARKS |
|------------|-----------------|--|--|--|---------|-----------|----------|---------------|
| | | | | | UNIT | MM | | |
| | KOOLANCE | | | | SCALE | N/S | APPAR | NZL-L06B(-BK) |
| DATE | | | | | BY | BY | BY | APPRO |
| 04/13/2017 | S.J.LEE | | | | | 3RD ANGLE | | |
| | | | | | | CODE NO. | DWG. NO. | |