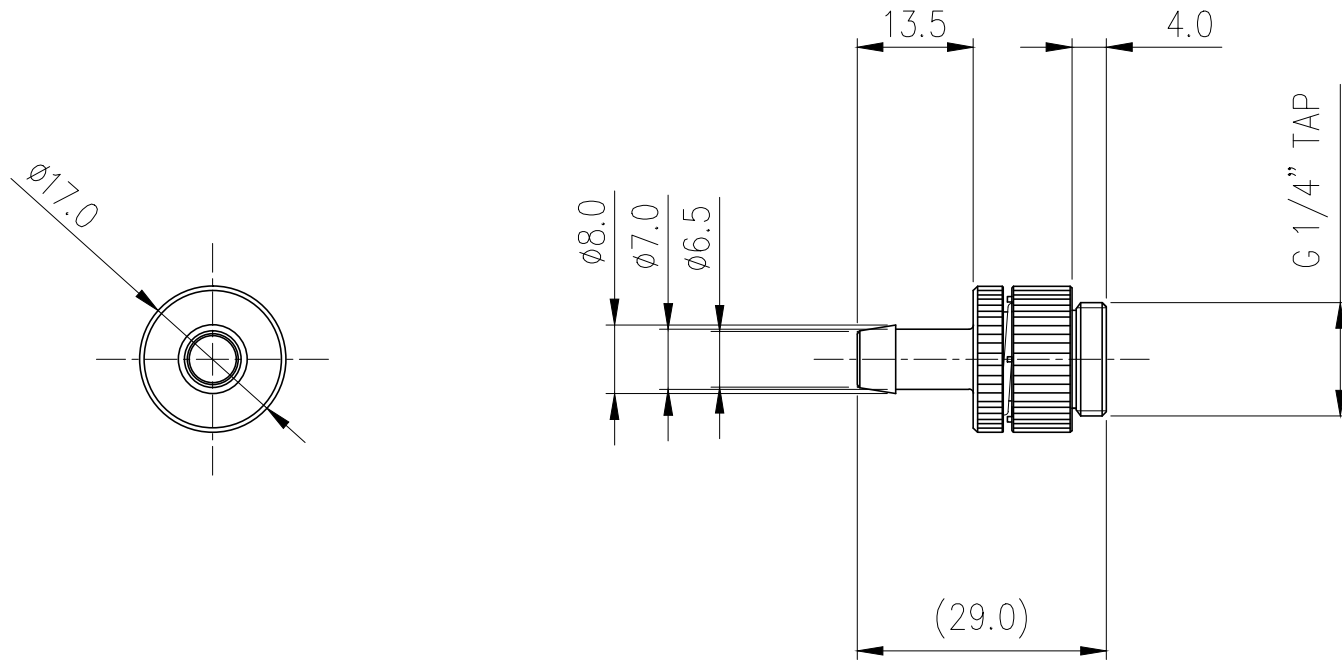



Swivel/Lock Barb Fitting for ID 06mm (1/4in), G
1/4 BSPP



Single hose barb fitting for 1/4in (6mm) ID tubing. This fitting swivels to relieve hose stress and accidental loosening. To tighten or untighten, simply push in on the fitting and twist. G 1/4 BSPP (parallel) thread. Hose clamp included for 3/8in (10mm) OD tubing.

General	
Weight	0.04 lb (0.02 kg)
Fitting Thread	G 1/4 BSPP
Max Pressure Tolerance @ 25° C	8kgf/cm2 (113.8psi)
Max Temperature Tolerance	100° C (212° F)
Wetted Materials	Brass, Nickel Plating, EPDM



NO.		DESCRIPTION			MATER'L		QUANTITY	REMARKS
					UNIT	MM	APPAR NZL-V06BS	
					SCALE	N/S	TITLE Ass'y	
DATE		BY	BY	BY	APPRO BY	3RD ANGLE		
04/22/2017		S.J.LEE			CODE NO.		DWG. NO.	