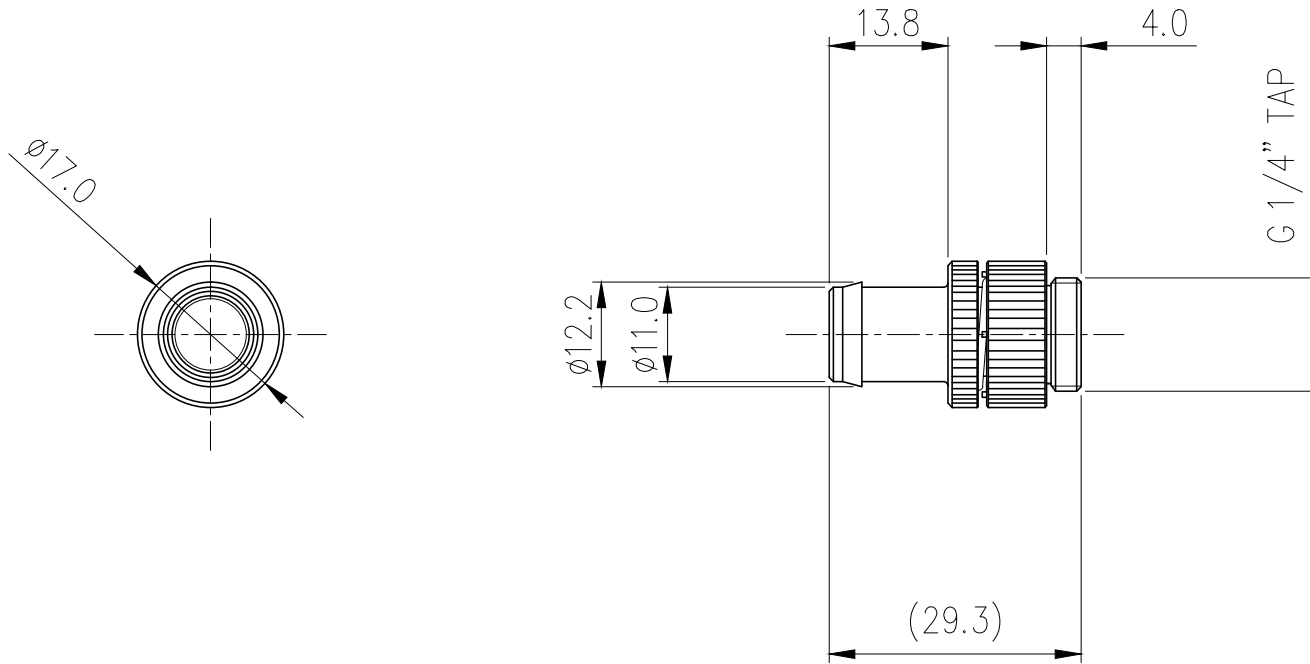


Swivel/Lock Barb Fitting for ID 10mm (3/8in), G
1/4 BSPP



Single barb fitting for 3/8in (10mm) ID tubing. This fitting swivels to relieve hose stress and accidental loosening. To tighten or untighten, simply push in on the fitting and twist. G 1/4 BSPP (parallel) thread. Spring clamp included for 1/2in (13mm) OD tubing.

General	
Weight	0.05 lb (0.02 kg)
Fitting Thread	G 1/4 BSPP
Max Pressure Tolerance @ 25°C	8kgf/cm ² (113.8psi)
Max Temperature Tolerance	100°C (212°F)
Wetted Materials	Brass, Nickel Plating, EPDM



NO.	DESCRIPTION	MATER'L		QUANTITY	REMARKS
	KOOLANCE	UNIT	MM	APPAR	NZL-V10BS
		SCALE	N/S	TITLE	Ass'y
DATE	BY	BY	BY	APPRO	BY
04/22/2017	S.J.LEE				
				3RD ANGLE	
				CODE NO.	DWG. NO.