



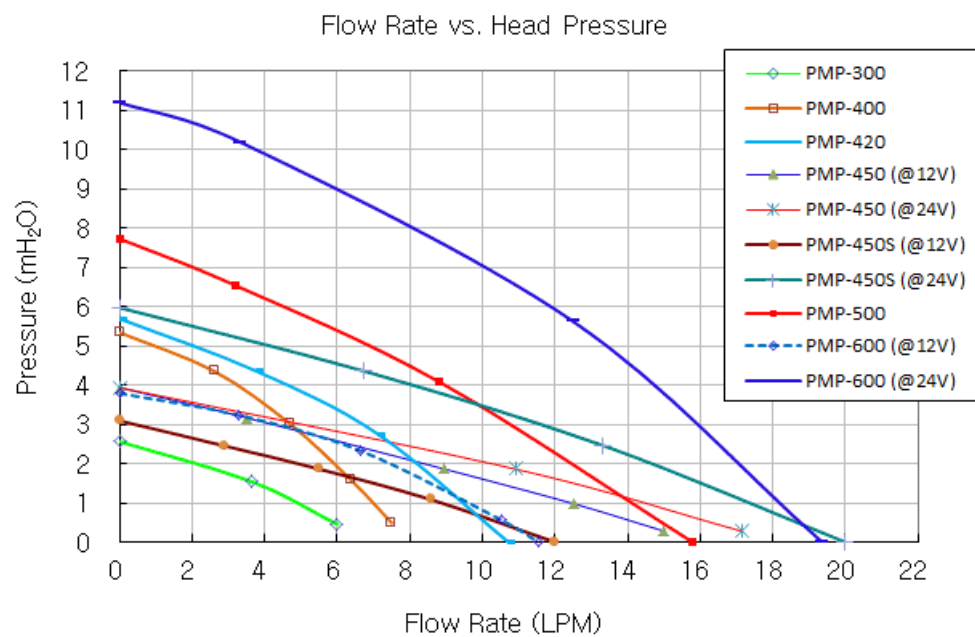
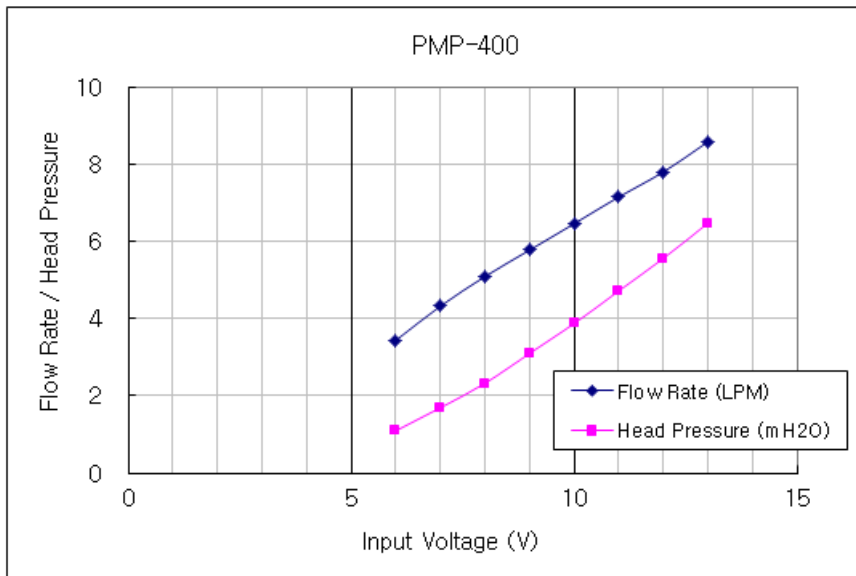
The PMP-400 is a high-pressure pump with a very low profile format.

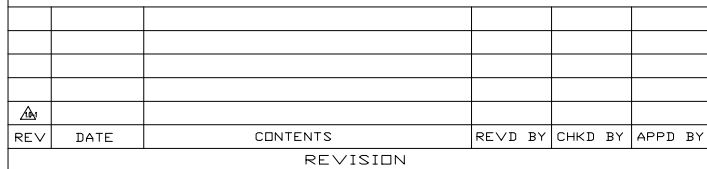
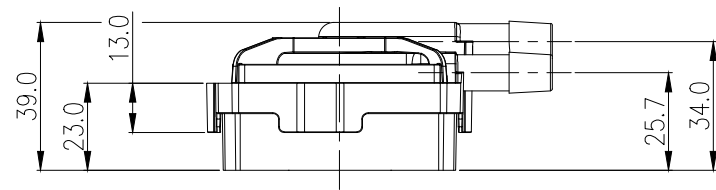
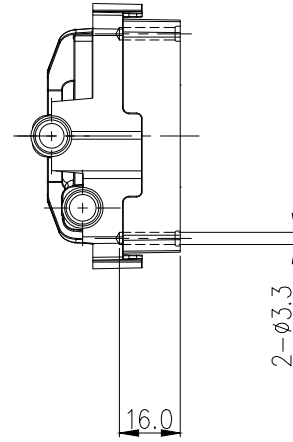
- Maximum Flow Rate: 7.5 L/min (1.9 gal/min)
- Maximum Head Pressure: 5.5m (18ft)
- Motor: Brushless DC, electronically commutated, spherical motor
- Power Consumption (at max): 20W
- Voltage Range: 8 to 13.2 VDC
- Startup Voltage: 9 to 13.2 VDC
- Maximum System Pressure: 1.5 kgf/cm² (22 PSI)
- Maximum Temperature: 60°C (140°F)
- Electrical Connector: 3-pin fan header with tachometer speed signal
- Tachometer: Open collector, max 20mA/24V, 2 pulses per revolution
- Hose Connections: 10mm (3/8in) ID barb fittings
- Wetted Materials: PPO, Carbon/Allumina Ceramic, EPDM or Viton, 316 SS or Plastic.
- Noise: Less than 40dBA
- Weight: 198g (7oz)
- MTBF 50k hours


*NOTE: If purchasing as a replacement for a newer Koolance product, wiring harness [CBL-CTR106P](#) may be needed.

General	
Weight	0.50 lb (0.23 kg)
Max Pressure Tolerance @ 25°C	1.5kgf/cm ² (22 psi)
Max Temperature Tolerance	60°C (140°F)
Wetted Materials	PPO, Carbon/Allumina Ceramic, EPDM or Viton, 316 SS or Plastic
Pumps	
Expected Lifetime	50,000 hrs. MTBF
Max Flow Rate	7.5L/min (1.9GPM)
Max Power	20W
Max Static Head	5.5m (18ft)

General	
Native Hose Connection	Barbs for ID 10mm (3/8in)
Speed Knob	
Tachometer	yes
Type	Magnetic Centrifugal
Voltage	8-13.2 VDC





NO.		DESCRIPTION			PART NO.		QTY.		REMARKS	
 KOOLANCE®					UNIT	MM	ITEM Pump			
					SCALE	N/S	TITLE			
DATE	DRAWN	BY	BY	APPRO	BY	Pump, ID 10mm (3/8in)				
AUG.10.2021	S.J.LEE					3RD ANGLE				
						KK CODE NO.		DRAWING NO.		REV
						PMP-400		-		2.0