



The Koolance PMP-450 is a reliable high-flow pump with built-in speed control knob. It handles external control throttling better than the [PMP-450S](#).

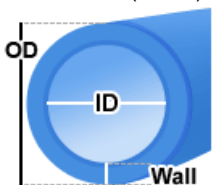
- Maximum Flow Rate: 15L/min (4.0 gal/min) @ 12V, 17.5L/min (4.6 gal/min) @ 24V
- Maximum Head Pressure: 3.9m (12.8ft) @ 12-24V
- Motor: Brushless DC, electronically commutated, spherical motor
- Power: 8-24 VDC, 3-35W, 0.30-1.50A
- Startup Voltage: 9 to 13.2 VDC
- Maximum System Pressure: 3.5 kgf/cm2 (50 PSI)
- Maximum Temperature: 60°C (140°F)
- Electrical Connector: 4-pin Molex power supply connection + 3-pin (single lead) tach
- Hose Connections: 13mm (1/2in) ID hose barbs
- Wetted Materials: PPO, Carbon/Allumina Ceramic, EPDM or Viton, 316 SS
- Noise: Less than 40dBA
- Weight: 862g (1.9lbs)
- MTBF 50k hours

Intended Tubing Size

ID: 13mm (1/2")

OD: 16mm (5/8")

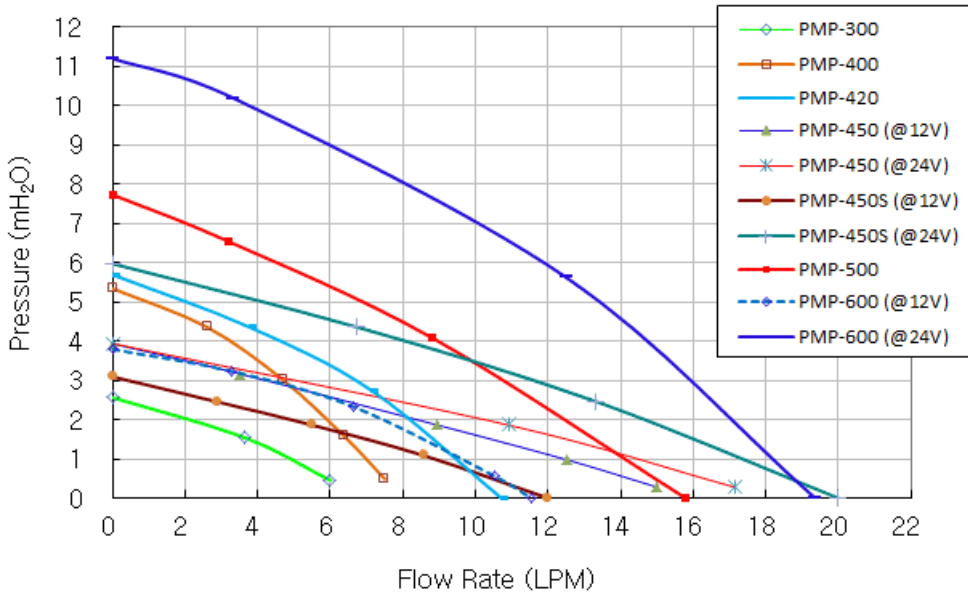
Wall: 1.5mm (1/16")



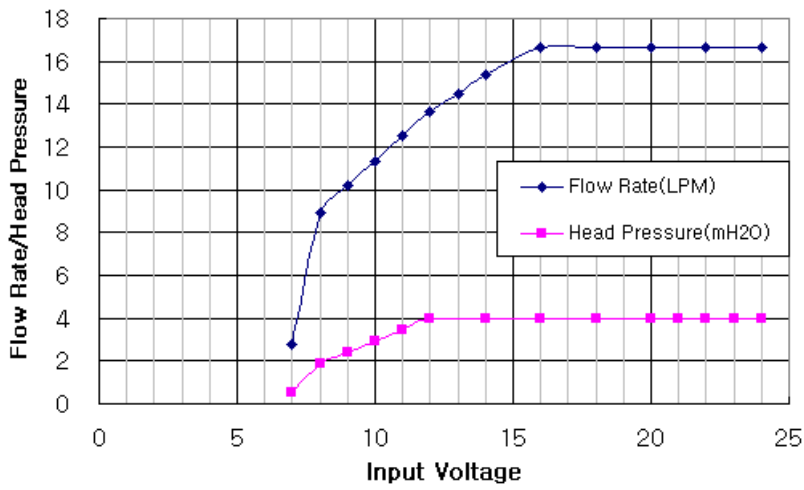
General	
Weight	1.20 lb (0.54 kg)
Materials	PPO, Carbon/Allumina Ceramic, EPDM or Viton, 316 SS
Max Pressure @ 25°C	3.5kgf/cm2 (50 psi)
Max Temperature	60°C (140°F)
Pumps	
Expected Lifetime	50,000 hrs. MTBF
Max Flow Rate	15L/min (4.0GPM) @ 12V, 17.5L/min (4.6GPM) @ 24V
Max Power	25W @ 12V, 35W @ 24V
Max Static Head	3.9m (12.8ft) @ 12-24V
Native Hose Connection	Barbs for ID 13mm (1/2in)
Speed Knob	yes
Tachometer	yes
Type	Magnetic Centrifugal

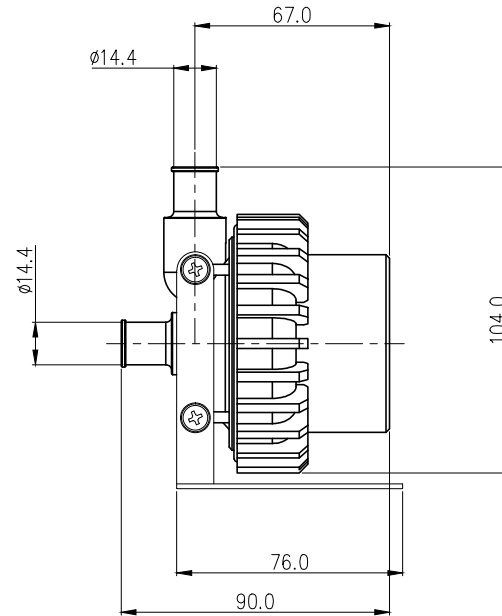
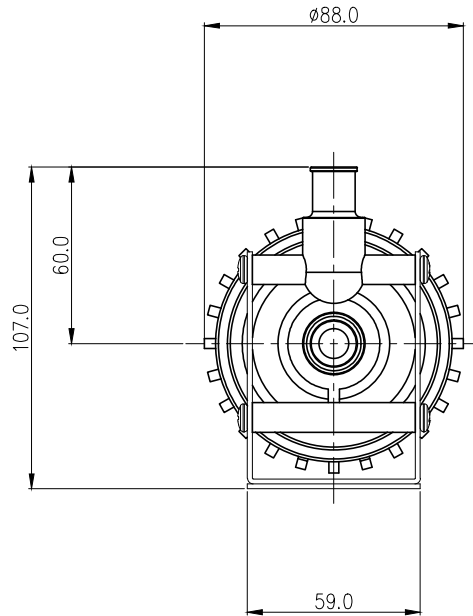
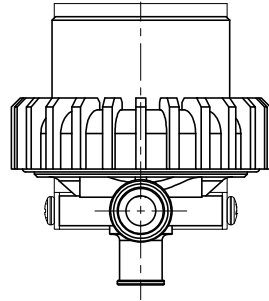
General	
Voltage	8-24 VDC

Flow Rate vs. Head Pressure



Koolance PMP-450 Pump





NO.	DESCRIPTION	MATER'L		QUANTITY	REMARKS
	KOOLANCE	UNIT	MM	PART NO.	PMP-450
		SCALE	N/S	TITLE	Ass'y
DATE	BY	BY	APPRO BY	3RD ANGLE	
05/12/2017	S.J.LEE			DWG. NO.	ITEM