

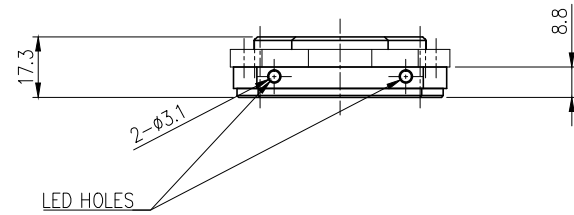
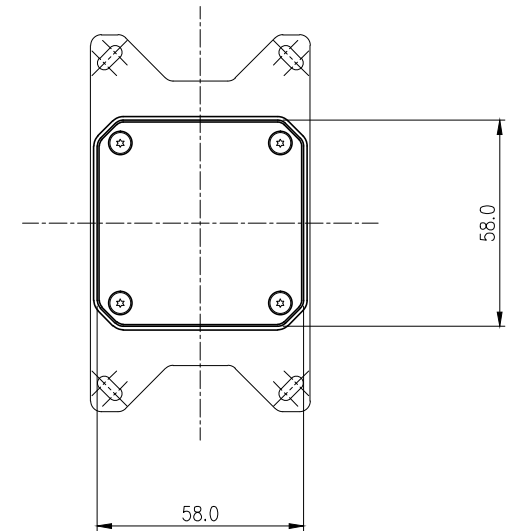
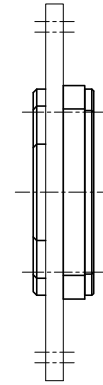
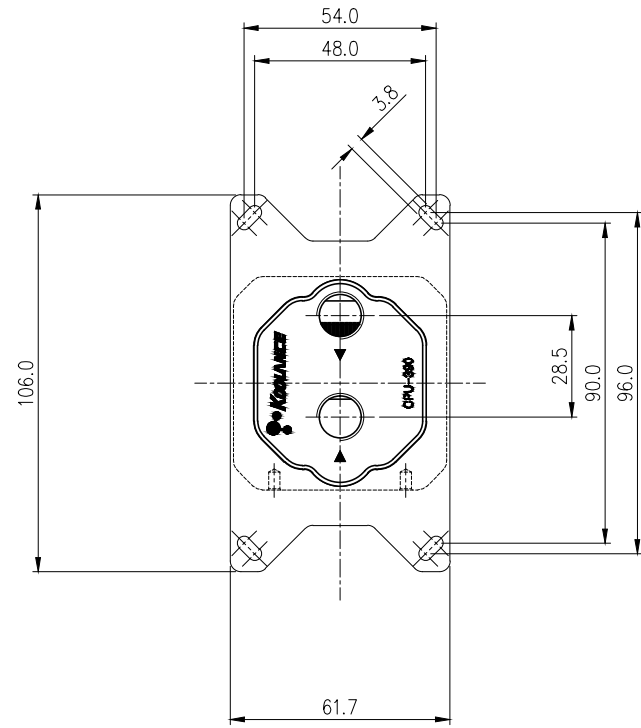
CPU-390A Water Block, Acrylic Top (AMD Processor)


Koolance's CPU-390 redefines thermal performance again with an all-new 0.17mm microfin process and internal flow optimizations. Versions are available with acrylic and copper tops.

CPU-390A features a microfin nickel-plated copper cold plate, acrylic top, and thick steel mounting bracket. Standard G 1/4 BSPP threading will accept any Koolance fitting diameter up to 19mm (3/4in) OD compression style. Please select the desired fitting type for this base model (it does not include fittings). The CPU-390A/CA support most boards using the following processors:

- AMD socket AM4
- AMD socket AM2, AM2+
- AMD socket AM3, AM3+
- AMD socket FM1, FM2, FM2+

General	
Weight	0.59 lb (0.27 kg)
Max Pressure Tolerance @ 25 °C	2kgf/cm2 (28.5psi)
Max Temperature Tolerance	80 °C (176 °F)
Wetted Materials	Nickel-Plated Copper, Stainless Steel, PMMA Acrylic, EPDM



NO.	DESCRIPTION				MATER'L		QUANTITY	REMARKS
					UNIT	MM	APPAR	CPU-390A
					SCALE	N/S	TITLE	
	BY	BY	BY	APPRO	BY	Ass'y		
DATE								
	S.J.LEE					3RD ANGLE		
						CODE NO.		
						DWG. NO.		