

**CPU-390I Water Block, Acrylic Top (Intel Processor)**

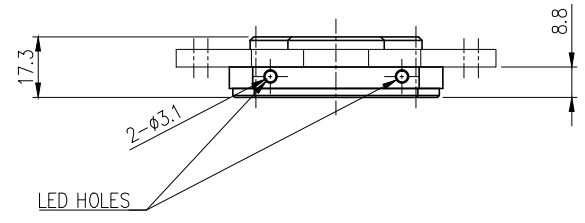
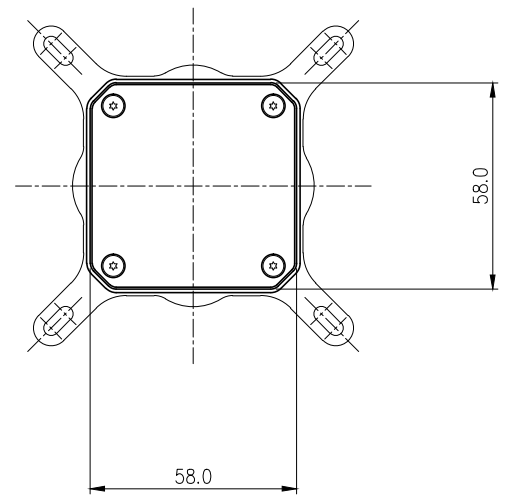
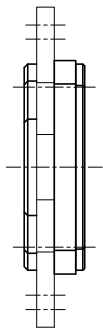
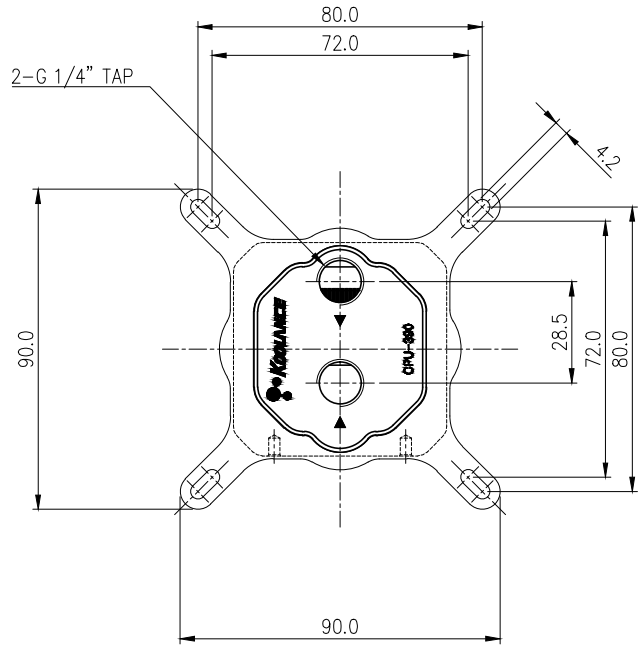


Koolance's CPU-390 redefines thermal performance again with an all-new 0.17mm microfin process and internal flow optimizations. Versions are available with acrylic and copper tops.

CPU-390I features a microfin nickel-plated copper cold plate, acrylic top, and thick steel mounting bracket. Standard G 1/4 BSPP threading will accept any Koolance fitting diameter up to 19mm (3/4in) OD compression style. Please select the desired fitting type for this base model (it does not include fittings). The CPU-390I/CI support most boards using the following processors:

- Intel socket LGA 2066
- Intel socket LGA 2011 / 2011-v3 (Square ILM only)
- Intel socket LGA 1150
- Intel socket LGA 1151
- Intel socket LGA 1155 / 1156
- Intel socket LGA 1366 (may require [BLT-CPASZD12](#) for fixed motherboard back plates)
- Intel socket LGA 775

General	
Weight	0.50 lb (0.23 kg)
Materials	Nickel-Plated Copper, Stainless Steel, PMMA Acrylic, EPDM
Max Pressure @ 25 °C	2kgf/cm <sup>2</sup> (28.5psi)
Max Temp. Operating Tolerance	80 °C (176 °F)



NO.	DESCRIPTION	MATER'L		QUANTITY	REMARKS
		UNIT	MM		
				APPAR CPU-390I	
			N/S	TITLE	Ass'y
DATE	BY	BY	BY	APPRO BY	
	S.J.LEE				3RD ANGLE
					CODE NO.
					DWG. NO.