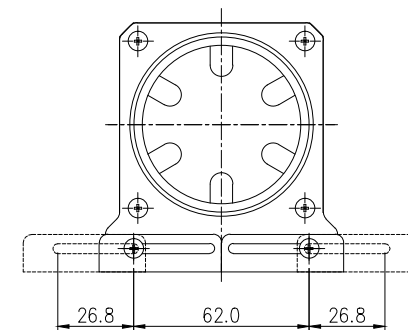
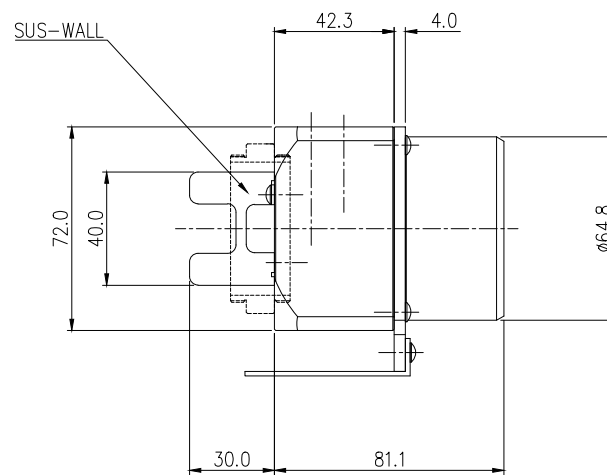
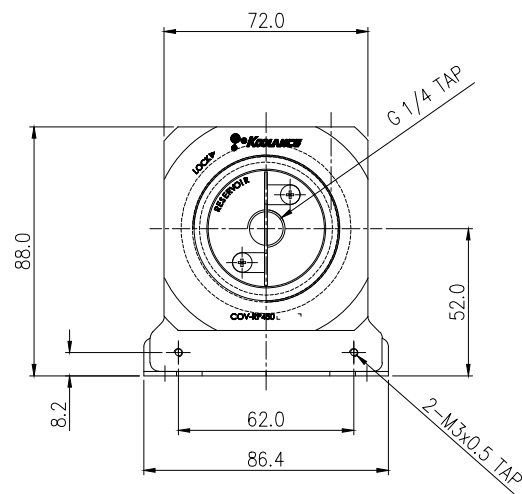
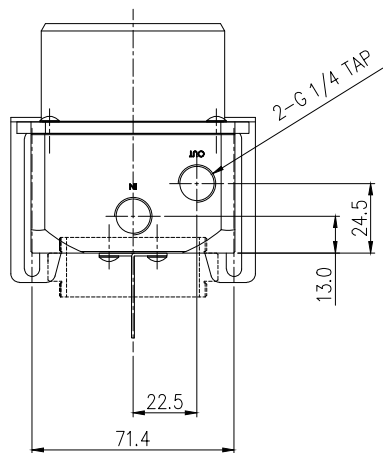





COV-RP450 is an acetal fitting and reservoir base for the Koolance [PMP-450](#) and [PMP-450S](#) pumps. Pump, reservoir, and fittings are sold separately. Along with enabling the use of any G 1/4 BSPP (parallel) thread fitting style and diameter, it allows flow to be specifically directed for increased pump performance or broader chassis integration. Fitting base, mounting bracket, coupler for 60mm OD reservoirs, socket plug, and mounting hardware are included.

Koolance [60mm OD](#) acrylic reservoir bodies can be directly connected to the COV-RP450 by using the included reservoir coupler. For [80mm OD](#) reservoirs, use separate reservoir thread adapter [TNK-CNT50T70](#).

General	
Weight	1.50 lb (0.68 kg)
Fitting Thread	G 1/4 BSPP
Max Pressure Tolerance @ 25 °C	2kgf/cm2 (28.5psi)
Max Temperature Tolerance	80 °C (176 °F)
Wetted Materials	Nickel-Plated Brass, POM Acetal, Stainless Steel, EPDM



△						
REV	DATE	CONTENTS	REVD BY	CHKD BY	APPD BY	
REVISION						

NO.		DESCRIPTION			MATER'L		QUANTITY	REMARKS
					UNIT	MM.	APPAR COV- RP450	
					SCALE	N/S	TITLE	
DATE	BY	BY	BY	APPRO BY	3RD ANGLE		SUS- wall version Ass'y	
	S.J.LEE				REF. NO.		DWG. NO.	