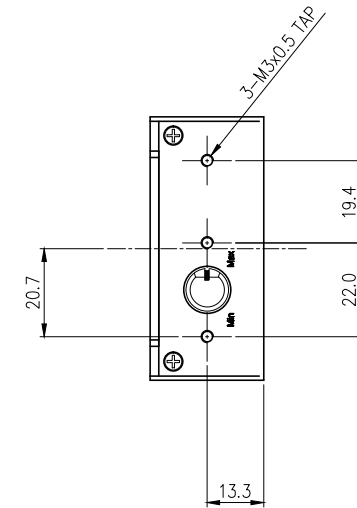
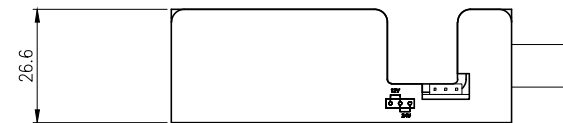
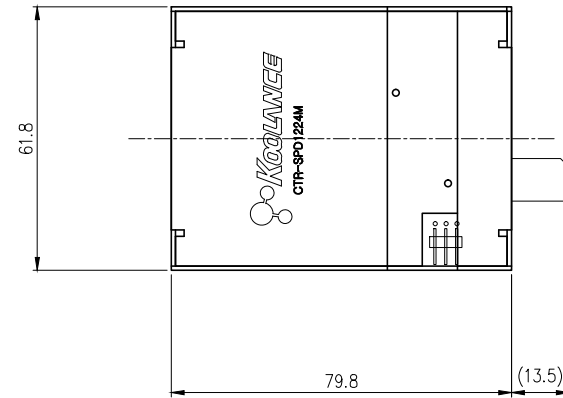
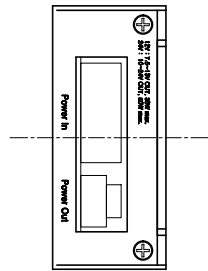





The Koolance CTR-SPD1224M uses voltage control to throttle speeds for 12V DC pumps or fans. With a jumper setting, it will also step-up and throttle voltage for 24V DC devices. A 12V DC input is required.

CAUTION: Do not operate components at voltages which exceed their specifications. Running a 12V-max pump at 24V from the speed controller can damage the pump. Do not connect devices which exceed the controller's maximum power rating (36W@12V, 50W@24V).

General	
Weight	0.50 lb (0.23 kg)



NO.		DESCRIPTION			MATER'L		QUANTITY		REMARKS			
					UNIT	MM	APPAR CNT—SPD1224M					
					SCALE	N/S	TITLE Ass'y					
		BY	BY	BY	APPRO	BY					3RD ANGLE	
DATE												
04/11/2017		S.J.LEE									CODE NO.	
							DWG. NO.					