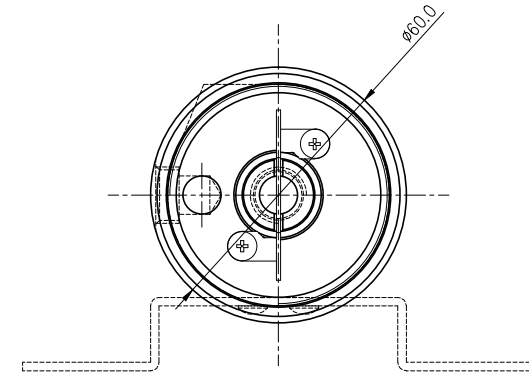
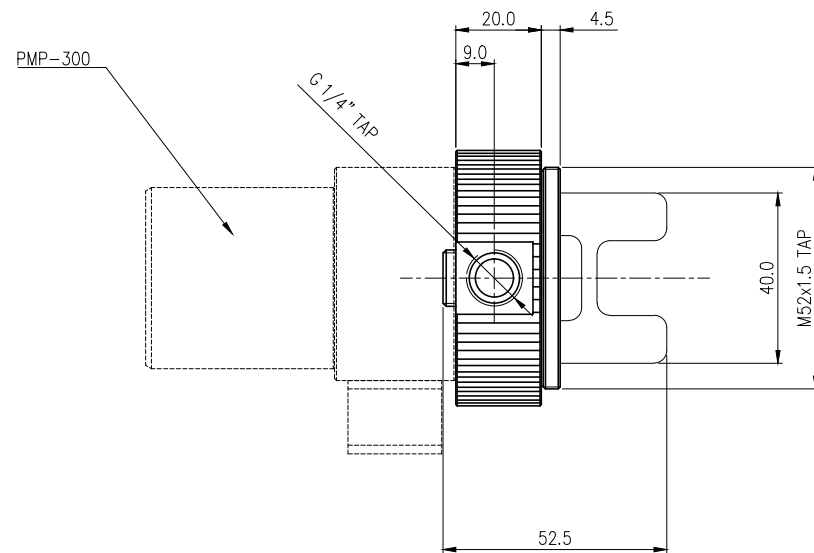
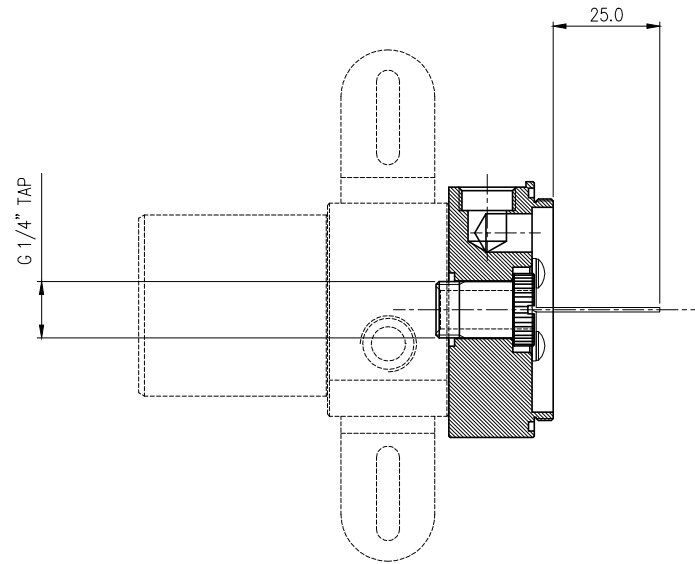



**Pump Reservoir Base for PMP-300/420/500/600  
(60mm OD)**

PMP-CNT300T is an acetal reservoir base for the Koolance [PMP-300](#), [PMP-420](#), [PMP-500](#), and [PMP-600](#) (sold separately). Koolance [60mm OD acrylic reservoir bodies](#) can be directly connected to the PMP-CNT300T. The fitting on the reservoir side can be pointed in any direction before tightening to the pump.

Pump and reservoir side O-rings, a removable stainless steel liquid partition, and nickel-plated brass attachment fitting are included.

General	
Weight	0.25 lb (0.11 kg)
Fitting Thread	G 1/4 BSPP
Max Pressure Tolerance @ 25°C	2kgf/cm2 (28.5psi)
Max Temperature Tolerance	70°C (158°F)
Wetted Materials	Nickel-Plated Brass, POM Acetal, Stainless Steel, EPDM



NO.		DESCRIPTION			MATER'L		QUANTITY		REMARKS	
					UNIT	MM	PART NO. PMP-CNT300T			
					SCALE	N/S	TITLE  Ass'y			
		BY	BY	BY	APPRO	BY				
DATE										
05/09/2017		S.J.LEE					DWG. NO.		ITEM	