

**QD2 Female Quick Disconnect No-Spill Coupling, Panel Barb for 06mm (1/4in)**

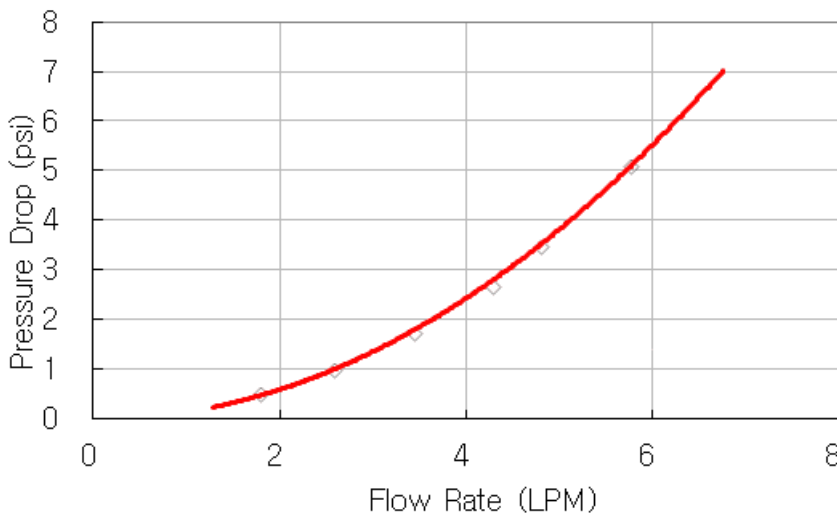


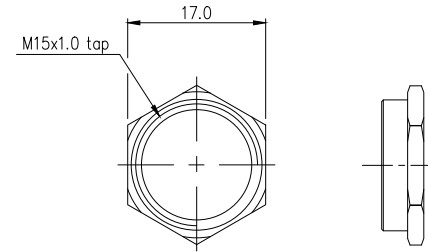
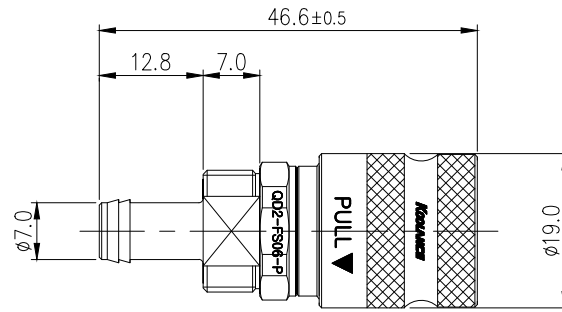
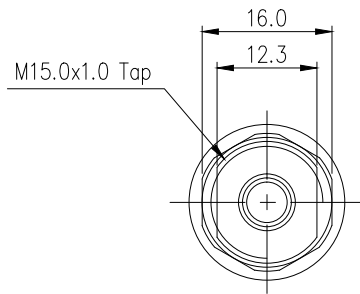
Koolance patented quick disconnect no-spill coupling with automatic shutoff. 6mm (1/4in) ID female panel-mountable hose barb with clamp for 10mm (3/8in) OD. It will only fit a Koolance QD2 male quick disconnect.

After pulling the ring on the female QDC side, the quick-disconnect fittings will separate. Liquid on both sides will be automatically obstructed with approximately 0.2ml freed. Coolant volume lost upon disconnection will rise with internal pressure higher than 0.5kgf/cm<sup>2</sup> (7psi).

General	
Weight	0.13 lb (0.06 kg)
Max No-Spill Pressure	0.5kgf/cm <sup>2</sup> (7psi)
Max Pressure Tolerance @ 25°C	8kgf/cm <sup>2</sup> (113.8psi) connected, 5kgf/cm <sup>2</sup> (71psi) disconnected
Max Temperature Tolerance	80°C (176°F)
Min Pressure Tolerance @ 25°C	-1.0kgf/cm <sup>2</sup> (-14psi)
Min Storage Temperature (*No Freezing)	-20°C (-4°C)
Seal Material	EPDM (Water/Glycol Liquids)
Wetted Materials	Nickel-Plated Brass, Stainless Steel, EPDM

QD2





NUT

REV	DATE	CONTENTS	APPD BY
REVISION			

NO.	DESCRIPTION	MATER'L		QUANTITY	REMARKS
		UNIT	MM		



SCALE N/S

DATE BY BY BY APPRD BY

3RD ANGLE

DWG. NO.

PART NO. QD2

TITLE QD2-FS06-P

ITEM