

**QD2 Female Quick Disconnect No-Spill Coupling, Male Threaded G 1/4 BSPP**

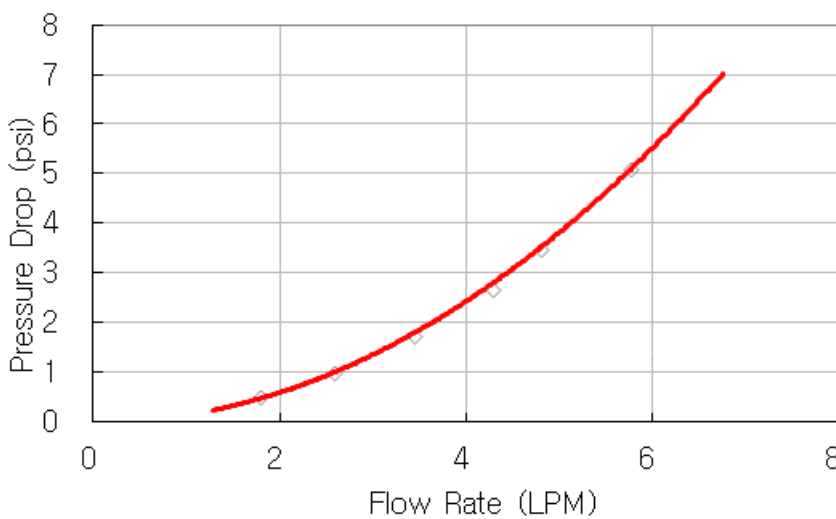


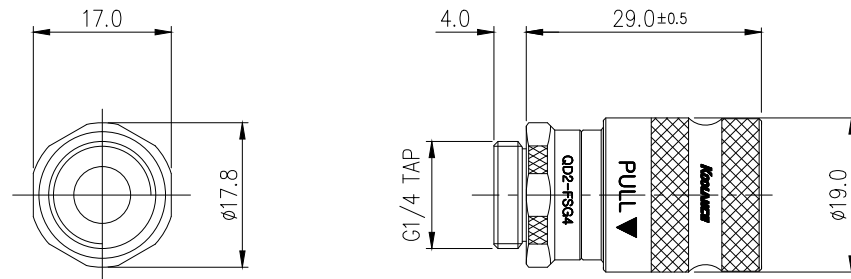
Koolance patented quick disconnect no-spill coupling with automatic shutoff. G 1/4 BSPP (parallel) thread male fitting for screwing directly into a water block or other component. It will only fit a Koolance QD2 male quick disconnect.

After pulling the ring on the female QDC side, the quick-disconnect fittings will separate. Liquid on both sides will be automatically obstructed with approximately 0.2ml freed. Coolant volume lost upon disconnection will rise with internal pressure higher than 0.5kgf/cm<sup>2</sup> (7psi).

General	
Weight	0.08 lb (0.04 kg)
Fitting Thread	G 1/4 BSPP
Materials	Nickel-Plated Brass, Stainless Steel, EPDM
Max Pressure Tolerance @ 25° C	8kgf/cm <sup>2</sup> (113.8psi) connected, 5kgf/cm <sup>2</sup> (71psi) disconnected
Max Temp. Operating Tolerance	100° C (212° F)

QD2





REV	DATE	CONTENTS	APPD BY
		REVISION	

NO.	DESCRIPTION			MATER'L	QUANTITY	REMARKS
				UNIT	MM	PART NO. QD2 SHORT
				SCALE	N/S	TITLE
DATE	BY	BY	BY	APPRD BY	3RD ANGLE	
		SONG			DWG. NO.	ITEM