

**QD2 Male Quick Disconnect No-Spill Coupling,
Panel Barb for ID 06mm (1/4in)**

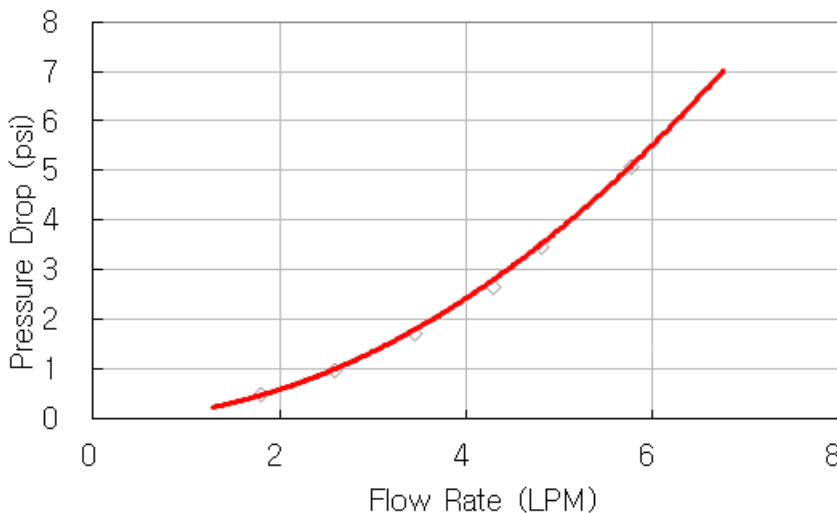


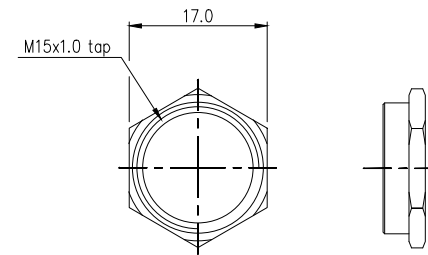
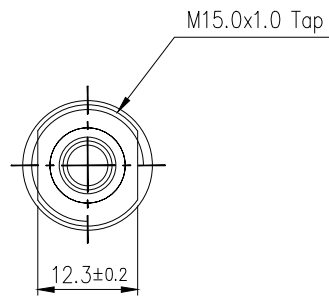
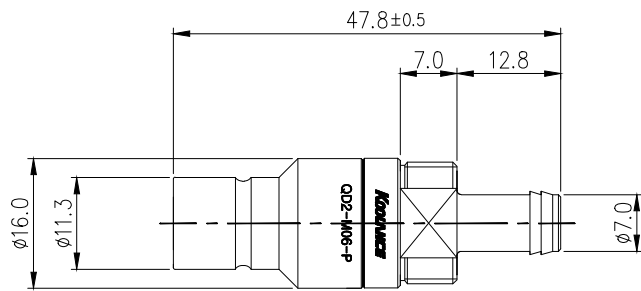
Koolance patented quick disconnect no-spill coupling with automatic shutoff. 6mm (1/4in) ID male panel-mountable hose barb with clamp for 10mm (3/8in) OD. It will only fit a Koolance QD2 female quick disconnect.

After pulling the ring on the female QDC side, the quick-disconnect fittings will separate. Liquid on both sides will be automatically obstructed with approximately 0.2ml freed. Coolant volume lost upon disconnection will rise with internal pressure higher than 0.5kgf/cm² (7psi).

General	
Weight	0.08 lb (0.04 kg)
Max No-Spill Pressure	0.5kgf/cm ² (7psi)
Max Pressure Tolerance @ 25°C	8kgf/cm ² (113.8psi) connected, 8kgf/cm ² (113.8psi) disconnected
Max Temperature Tolerance	80°C (176°F)
Min Pressure Tolerance @ 25°C	-1.0kgf/cm ² (-14psi)
Min Storage Temperature (*No Freezing)	-20°C (-4°C)
Seal Material	EPDM (Water/Glycol Liquids)
Wetted Materials	Nickel-Plated Brass, Stainless Steel, EPDM

QD2





NUT

REV	DATE	CONTENTS	REVD BY	CHKD BY	APPD BY
REVISION					

NO.	DISCRIPTION				MATER'L		QUANTITY	REMARKS
					UNIT	MM	ITEM	QD2
						SCALE	N/S	TITLE
								QD2-M06-P
DATE	BY	BY	BY	APPRO BY	ANGULAR DIMENSIONS		3RD ANGLE	
					XX°	±0.5°	CODE NO.	DWG. NO.
					XX.X°	±0.1°		PAGE
					SURFACE ROUGHNESS	SURFACE	SURFACE	
						.63	1.6	