

QD2 Male Quick Disconnect No-Spill Coupling, Male Threaded G 1/4 BSPP

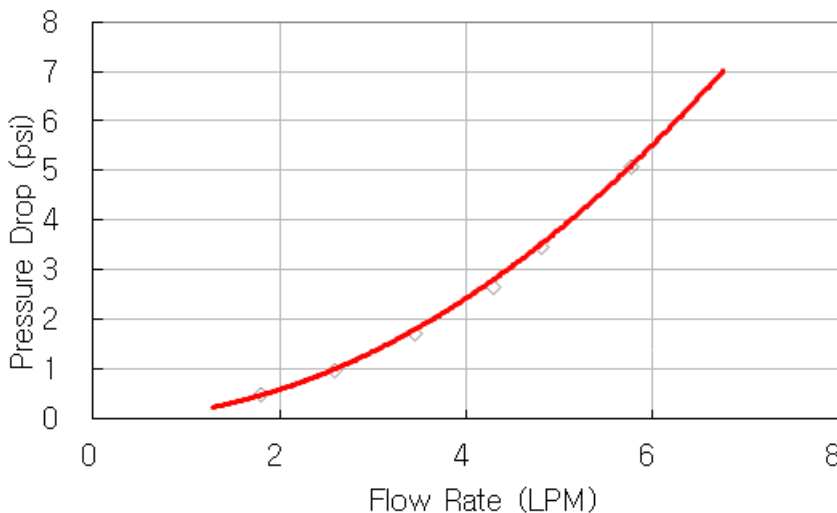


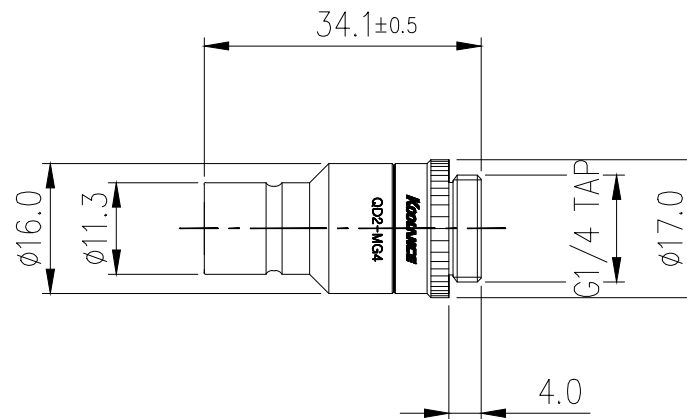
Koolance patented quick disconnect no-spill coupling with automatic shutoff. G 1/4 BSPP (parallel) thread male fitting for screwing directly into a water block or other component. It will only fit a Koolance QD2 female quick disconnect.

After pulling the ring on the female QDC side, the quick-disconnect fittings will separate. Liquid on both sides will be automatically obstructed with approximately 0.2ml freed. Coolant volume lost upon disconnection will rise with internal pressure higher than 0.5kgf/cm² (7psi).

General	
Weight	0.08 lb (0.04 kg)
Max No-Spill Pressure	0.5kgf/cm ² (7psi)
Max Pressure Tolerance @ 25 °C	8kgf/cm ² (113.8psi) connected, 8kgf/cm ² (113.8psi) disconnected
Max Temperature Tolerance	80 °C (176 °F)
Min Pressure Tolerance @ 25 °C	-1.0kgf/cm ² (-14psi)
Min Storage Temperature (*No Freezing)	-20°C (-4°F)
Seal Material	EPDM (Water/Glycol Liquids)
Wetted Materials	Nickel-Plated Brass, Stainless Steel, EPDM

QD2 (One Pair)





REV	DATE	CONTENTS	REVD BY	CHKD BY	APPD BY
REVISION					

NO.	DISCRIPTION				MATER'L		QUANTITY	REMARKS
	KOOLANCE DECIMAL PLACES INCHES MILLIMETRES .XXX ±.005 ±0.1 .XX ±.010 ±0.3 .X ±.020 ±0.5				UNIT	MM	ITEM	QD2
					SCALE	N/S	TITLE	QD2-MG4
DATE	BY	BY	BY	APPRO BY	ANGULAR DIMENSIONS		3RD ANGLE	
					XX" ±0.5"		CODE NO.	DWG. NO.
					XX.X" ±0.1"			PAGE
					SURFACE SURFACE			
					ROUGHNESS .63 1.6			