

**QD2 Male Quick Disconnect No-Spill Coupling,
Panel Barb for ID 06mm (1/4in)**

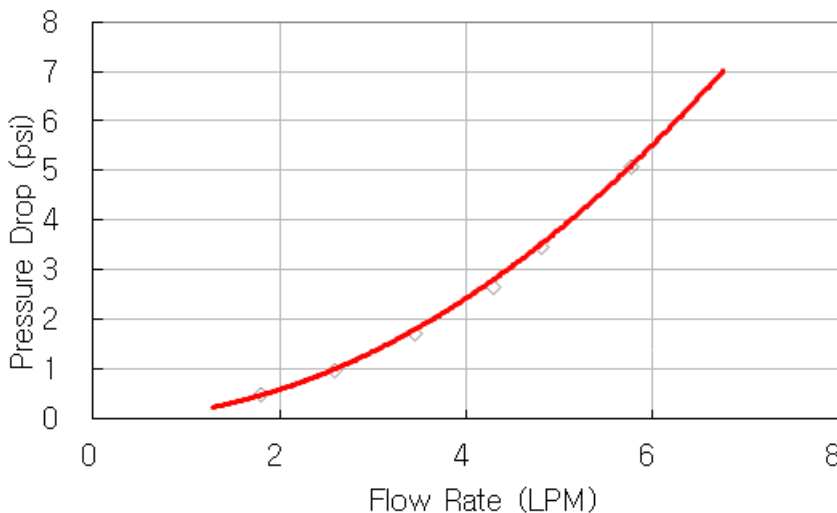


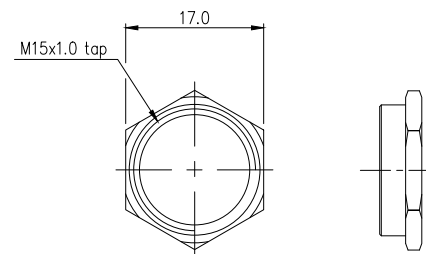
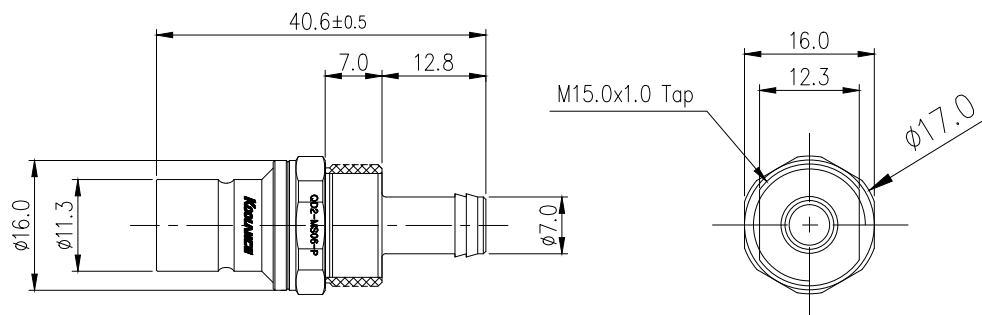
Koolance patented quick disconnect no-spill coupling with automatic shutoff. 6mm (1/4in) ID male panel-mountable hose barb with clamp for 10mm (3/8in) OD. It will only fit a Koolance QD2 female quick disconnect.

After pulling the ring on the female QDC side, the quick-disconnect fittings will separate. Liquid on both sides will be automatically obstructed with approximately 0.2ml freed. Coolant volume lost upon disconnection will rise with internal pressure higher than 0.5kgf/cm² (7psi).

General	
Weight	0.08 lb (0.04 kg)
Max No-Spill Pressure	0.5kgf/cm ² (7psi)
Max Pressure Tolerance @ 25 °C	8kgf/cm ² (113.8psi) connected, 8kgf/cm ² (113.8psi) disconnected
Max Temperature Tolerance	80 °C (176 °F)
Min Pressure Tolerance @ 25 °C	-1.0kgf/cm ² (-14psi)
Min Storage Temperature (*No Freezing)	-20°C (-4°F)
Seal Material	EPDM (Water/Glycol Liquids)
Wetted Materials	Nickel-Plated Brass, Stainless Steel, EPDM


QD2 (One Pair)





NUT

REV	DATE	CONTENTS	APPD BY
REVISION			

NO.		DESCRIPTION			MATER'L		QUANTITY		REMARKS	
 KOOLANCE®					UNIT		MM		PART NO. QD2	
		BY			SCALE		N/S		TITLE QD2-MS06-P	
DATE		BY			BY		3RD ANGLE			
		SONG					DWG. NO.			
									ITEM	