

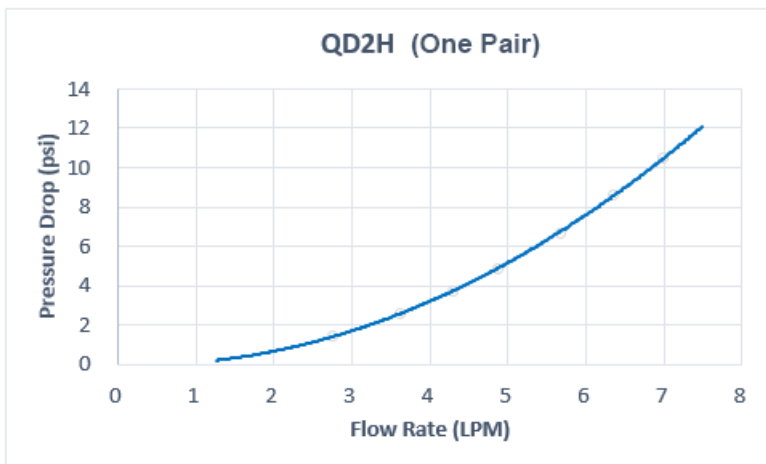
QD2H Male Quick Disconnect No-Spill Coupling, Panel Barb for ID 06mm (1/4in)

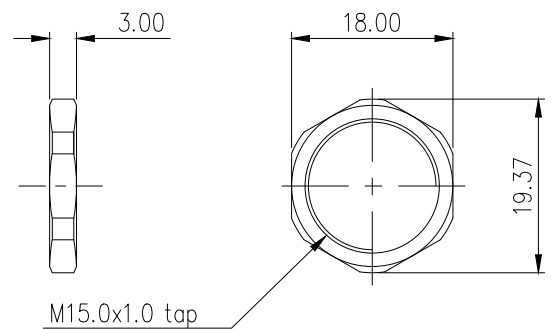
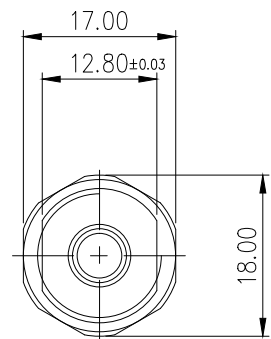
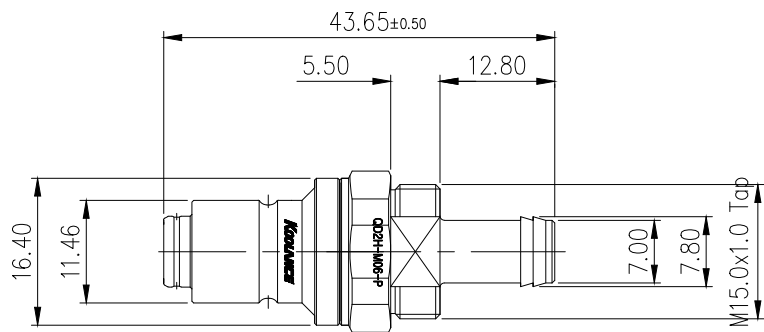


Koolance patented quick disconnect no-spill coupling with automatic shutoff. 6mm (1/4in) ID male panel-mountable barb fitting with spring clamp for 10mm (3/8in) OD. It will only fit a Koolance QD2H female quick disconnect.

After pulling the ring on the female QDC side, the quick-disconnect fittings will separate. Liquid on both sides will be automatically obstructed with approximately 0.2ml freed. Coolant volume lost upon disconnection will rise with internal pressure higher than 10kgf/cm² (142psi).


General	
Weight	0.08 lb (0.04 kg)
Max No-Spill Pressure	10kgf/cm ² (142psi)
Max Pressure Tolerance @ 25° C	12kgf/cm ² (170.7psi)
Max Temperature Tolerance	80° C (176° F)
Min Pressure Tolerance @ 25° C	-1.0kgf/cm ² (-14psi)
Min Storage Temperature (*No Freezing)	-20° C (-4° F)
Seal Material	EPDM (Water/Glycol Liquids)
Wetted Materials	Nickel-Plated Brass, Stainless Steel, EPDM





NUT DIMENSION

REV	DATE	CONTENTS	APPD BY	
REVISION				

NO.		DESCRIPTION			MATER'L		QUANTITY		REMARKS	
					UNIT	MM	PART NO. QD2H-M06-P			
					SCALE	N/S	TITLE DIMENSION			
DATE		BY	BY	BY	APPRO BY	3RD ANGLE				
song						DWG. NO.				