

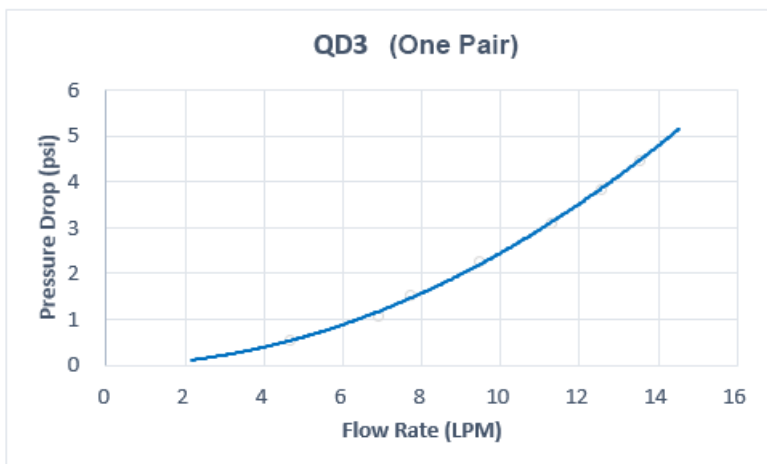
**QD3 Female Quick Disconnect No-Spill Coupling, Male Threaded G 1/4 BSPP \*Black\***

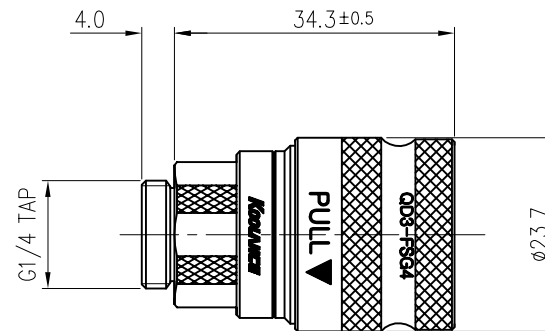
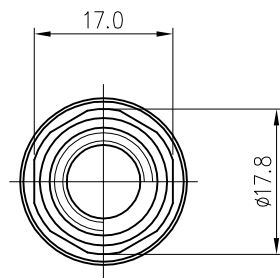


Koolance patented quick disconnect no-spill coupling with automatic shutoff. G 1/4 BSPP (parallel) thread female fitting for screwing directly into a water block or other component. It will only fit a Koolance QD3 male quick disconnect.

After pulling the ring on the female QDC side, the quick-disconnect fittings will separate. Liquid on both sides will be automatically obstructed with approximately 0.2ml freed. Coolant volume lost upon disconnection will rise with internal pressure higher than 0.5kgf/cm<sup>2</sup> (7psi).

General	
Weight	0.19 lb (0.09 kg)
Fitting Thread	G 1/4 BSPP
Max No-Spill Pressure	0.5kgf/cm <sup>2</sup> (7psi)
Max Pressure Tolerance @ 25° C	8kgf/cm <sup>2</sup> (113.8psi)
Max Temperature Tolerance	80° C (176° F)
Min Pressure Tolerance @ 25° C	-1.0kgf/cm <sup>2</sup> (-14psi)
Min Storage Temperature (*No Freezing)	-20° C (-4° F)
Seal Material	EPDM (Water/Glycol Liquids)
Wetted Materials	Brass, Stainless Steel, EPDM





REV	DATE	CONTENTS	REVD BY	CHKD BY	APPD BY
REVISION					

NO.		DISCRIPTION					MATER'L		QUANTITY		REMARKS		
<b>Koolance</b>					DECIMAL PLACES	INCHES	MILLIMETRES	UNIT	MM	ITEM QD3 SHORT			
					.XXX	±.005	±0.1	SCALE	N/S	TITLE QD3-FSG4			
					.XX	±.010	±0.3						
					.X	±.020	±0.5						
		BY	BY	BY	APPRO	ANGULAR DIMENSIONS			3RD ANGLE				
DATE						XX° XX.X°		±0.5° ±0.1°		CODE NO.		DWG. NO.	PAGE
		SONG				SURFACE ROUGHNESS		SURFACE .63		SURFACE 1.6			