

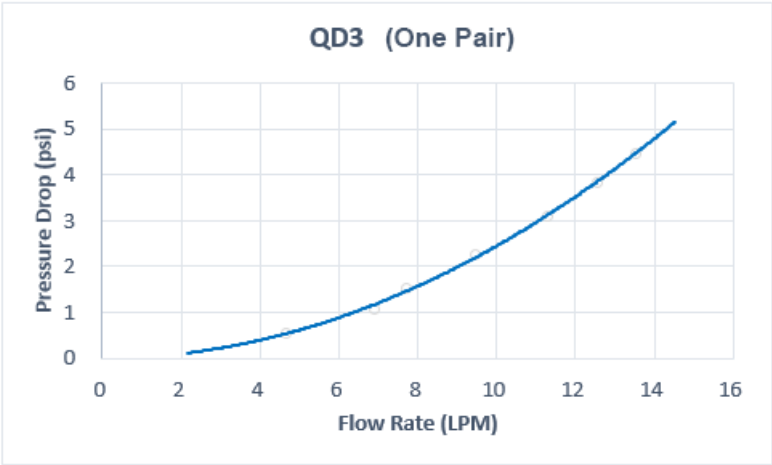
**QD3 Male Quick Disconnect No-Spill Coupling,
Panel Barb for ID 13mm (1/2in)**

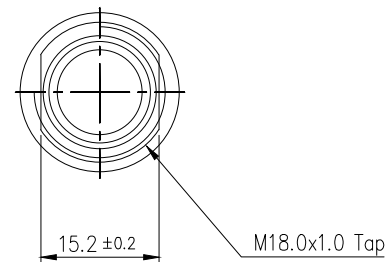
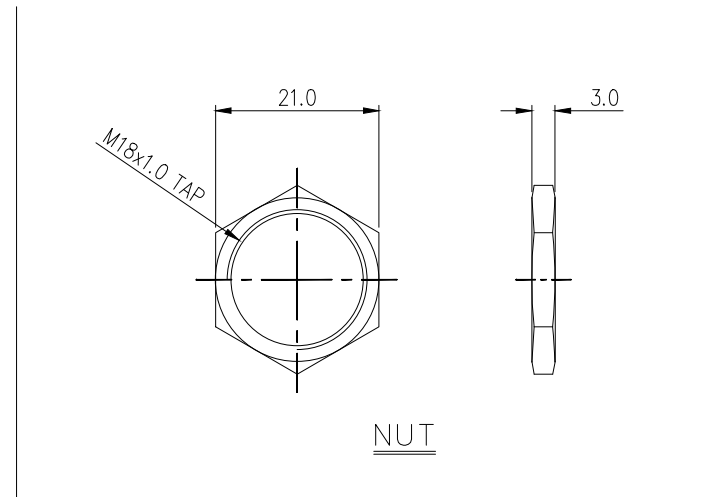
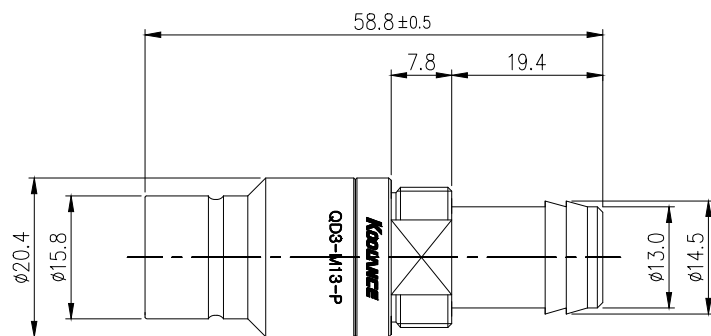


Koolance patented quick disconnect no-spill coupling with automatic shutoff. 13mm (1/2in) ID male panel-mountable hose barb with clamp for 16mm (5/8in) OD. It will only fit a Koolance QD3 female quick disconnect.


After pulling the ring on the female QDC side, the quick-disconnect fittings will separate. Liquid on both sides will be automatically obstructed with approximately 0.2ml freed. Coolant volume lost upon disconnection will rise with internal pressure higher than 0.5kgf/cm2 (7psi).

General	
Weight	0.14 lb (0.06 kg)
Max No-Spill Pressure	0.5kgf/cm2 (7psi)
Max Pressure Tolerance @ 25° C	8kgf/cm2 (113.8psi)
Max Temperature Tolerance	80° C (176° F)
Min Pressure Tolerance @ 25° C	-1.0kgf/cm2 (-14psi)
Min Storage Temperature (*No Freezing)	-20° C (-4° F)
Seal Material	EPDM (Water/Glycol Liquids)
Wetted Materials	Brass, Nickel Plating, Stainless Steel, EPDM





REV	DATE	CONTENTS	REVD BY	CHKD BY	APPD BY

NO.		DISCRIPTION				MATER'L		QUANTITY		REMARKS	
		DECIMAL PLACES		INCHES		MILLIMETRES		UNIT		MM	
		.XXX		±.005		±0.1		ITEM		QD3	
		.XX		±.010		±0.3		SCALE		N/S	
		.X		±.020		±0.5		TITLE		QD3-M13-P	
		BY		BY		BY		APPRO		BY	
DATE		ANGULAR DIMENSIONS				3RD ANGLE		CODE NO.		DWG. NO.	
		XX" X"		±0.5" ±0.1"							
		SURFACE ROUGHNESS		SURFACE		SURFACE					
				.63		1.6					
										PAGE	