

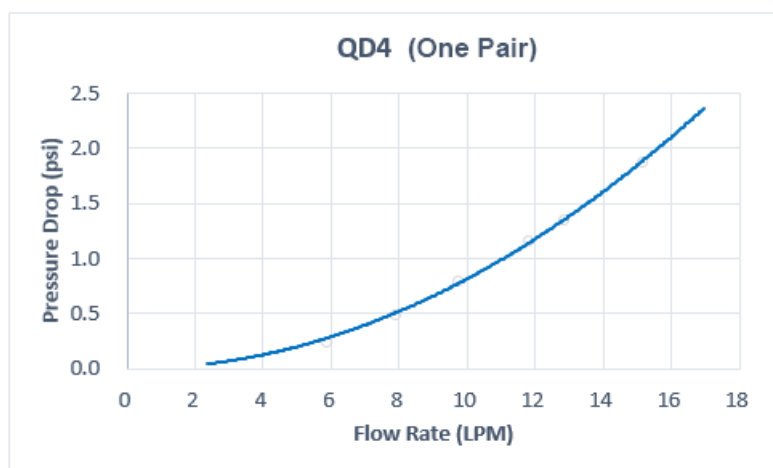
QD4 Male Quick Disconnect No-Spill Coupling, Male Threaded, 3/8 NPT

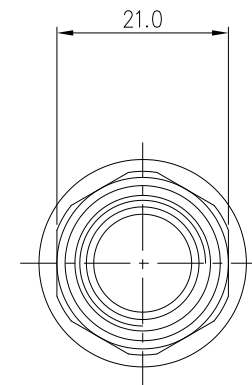
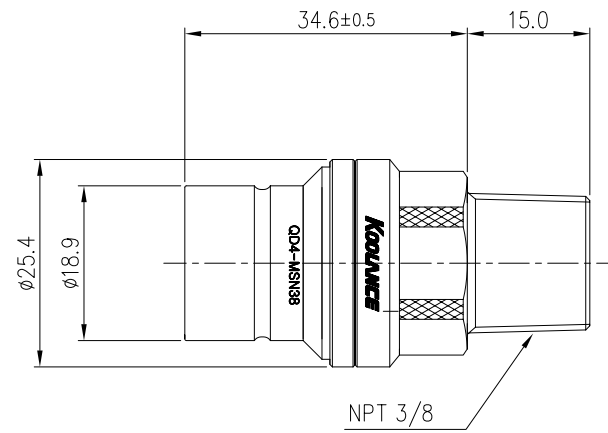


Koolance patented quick disconnect no-spill coupling with automatic shutoff. 3/8 NPT (tapered) thread male fitting for screwing directly into a component of the same threading. It will only fit a Koolance QD4 female quick disconnect.

After pulling the ring on the female QDC side, the quick-disconnect fittings will separate. Liquid on both sides will be automatically obstructed with approximately 0.2ml freed. Coolant volume lost upon disconnection will rise with internal pressure higher than 0.5kgf/cm² (7psi).

General	
Weight	0.15 lb (0.07 kg)
Fitting Thread	NPT 3/8
Max No-Spill Pressure	0.5kgf/cm ² (7psi)
Max Pressure Tolerance @ 25° C	8kgf/cm ² (113.8psi)
Max Temperature Tolerance	80° C (176° F)
Min Pressure Tolerance @ 25° C	-1.0kgf/cm ² (-14psi)
Min Storage Temperature (*No Freezing)	-20° C (-4° F)
Seal Material	EPDM (Water/Glycol Liquids)
Wetted Materials	Brass, Nickel Plating, Stainless Steel, EPDM





REV	DATE	CONTENTS	REVD BY	CHKD BY	APPD BY	
REVISION						

NO.		DISCRIPTION					MATER'L		QUANTITY	REMARKS
<i>Koolance inc.</i>		DECIMAL PLACES		INCHES	MILLIMETRES	UNIT	MM	ITEM	QD4 SHORT	
		.XXX .XX .X		±.005 ±.010 ±.020	±0.1 ±0.3 ±0.5	SCALE	N/S	TITLE	QD4-MSN38	
		ANGULAR DIMENSIONS					3RD ANGLE			
DATE		BY	BY	BY	APPRO BY	CODE NO.		DWG. NO.	PAGE	
SONG										
		SURFACE ROUGHNESS		SURFACE	SURFACE					
				.63	1.6					