

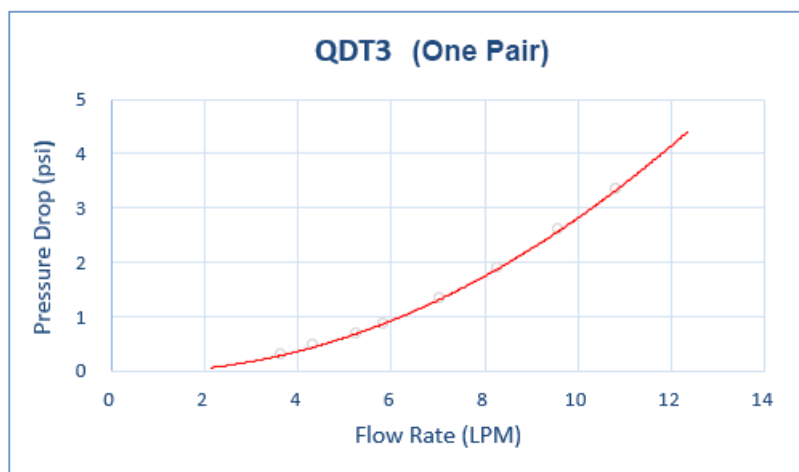
QDT3 EPDM Female Quick Disconnect No-Spill Coupling, Compression for 10mm x 13mm (3/8in x 1/2in)

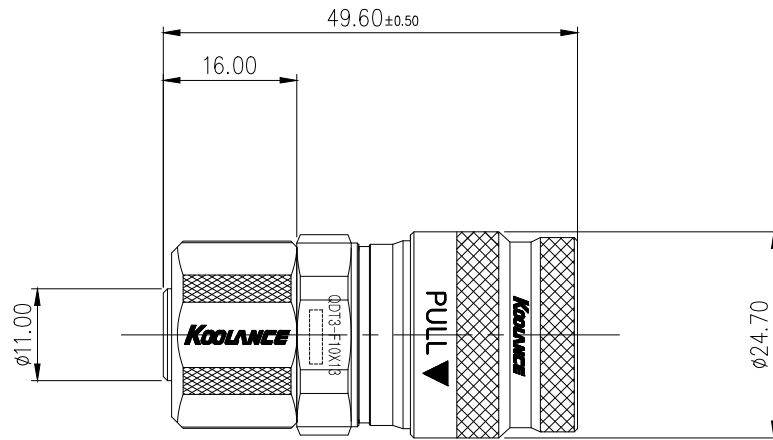
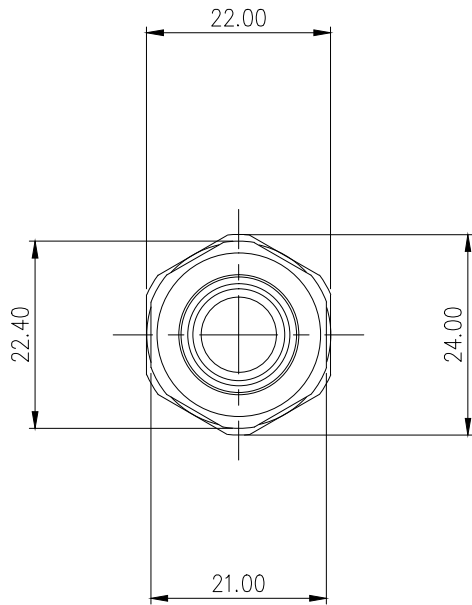


Koolance patented quick disconnect no-spill coupling with automatic shutoff. 10mm (3/8in) ID female straight connection with compression fitting. It will only fit a Koolance QD3 male quick disconnect.


After pulling the ring on the female QDC side, the quick-disconnect fittings will separate. Liquid on both sides will be automatically obstructed with approximately 0.2ml freed. Coolant volume lost upon disconnection will rise with internal pressure higher than 0.5kgf/cm2 (7psi).

General	
Weight	0.21 lb (0.10 kg)
Max No-Spill Pressure	10kgf/cm2 (142psi)
Max Pressure Tolerance @ 25 °C	12kgf/cm2 (170.7psi)
Max Temperature Tolerance	80 °C (176 °F)
Min Pressure Tolerance @ 25 °C	-1.0kgf/cm2 (-14psi)
Min Storage Temperature (*No Freezing)	-40°C (-40°F) Connected, -30°C (-22°F) Disconnected
Seal Material	EPDM (Water/Glycol Liquids)
Wetted Materials	Chrome-Plated Brass, Stainless Steel, EPDM





REV	DATE	CONTENTS	APPD BY
REVISION			

NO.		DESCRIPTION		MATER'L		QUANTITY	REMARKS
		UNIT		MM	PART NO.	QDT3-F10X13	
		SCALE		N/S	TITLE	DIMENSION	
DATE		BY	BY	BY	BY		
		3RD ANGLE		DWG. NO.		ITEM	QDT3
		S.J.LEE					