

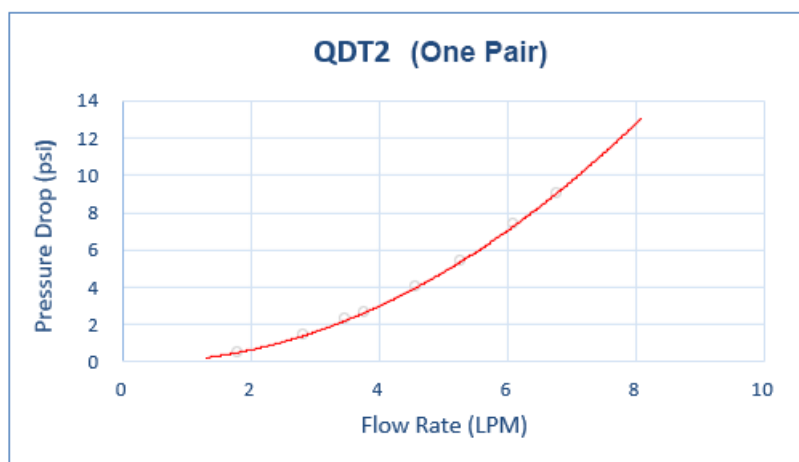
QDT2 EPDM Female Quick Disconnect No-Spill Coupling, Compression for 06mm x 10mm (1/4in x 3/8in)

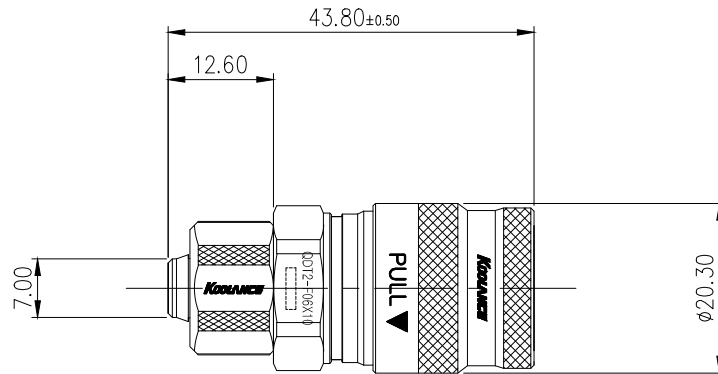
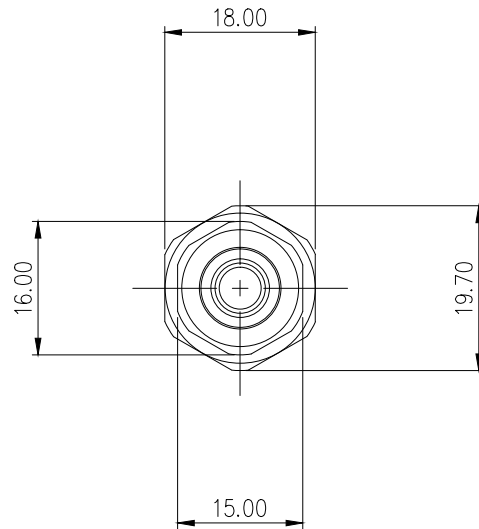


Koolance patented quick disconnect no-spill coupling with automatic shutoff. 6mm (1/4in) ID female straight connection with compression fitting. It will only fit a Koolance QDT2 male quick disconnect.

After pulling the ring on the female QDC side, the quick-disconnect fittings will separate. Liquid on both sides will be automatically obstructed with approximately 0.2ml freed.

General	
Weight	0.13 lb (0.06 kg)
Max No-Spill Pressure	10kgf/cm2 (142psi)
Max Pressure Tolerance @ 25 °C	12kgf/cm2 (170.7psi)
Max Temperature Tolerance	80 °C (176 °F)
Min Pressure Tolerance @ 25 °C	-1.0kgf/cm2 (-14psi)
Min Storage Temperature (*No Freezing)	-40°C (-40°F) Connected, -30°C (-22°F) Disconnected
Seal Material	EPDM (Water/Glycol Liquids)
Wetted Materials	Chrome-Plated Brass, Stainless Steel, EPDM





REV	DATE	CONTENTS	APPD BY
REVISION			

NO.		DESCRIPTION		MATER'L		QUANTITY	REMARKS
		UNIT		MM	PART NO. QDT2-F06X10		
				SCALE	N/S	TITLE	
DATE		BY	BY	BY	BY	3RD ANGLE	
		S.J.LEE				DWG. NO.	
						ITEM	
						QDT2	