

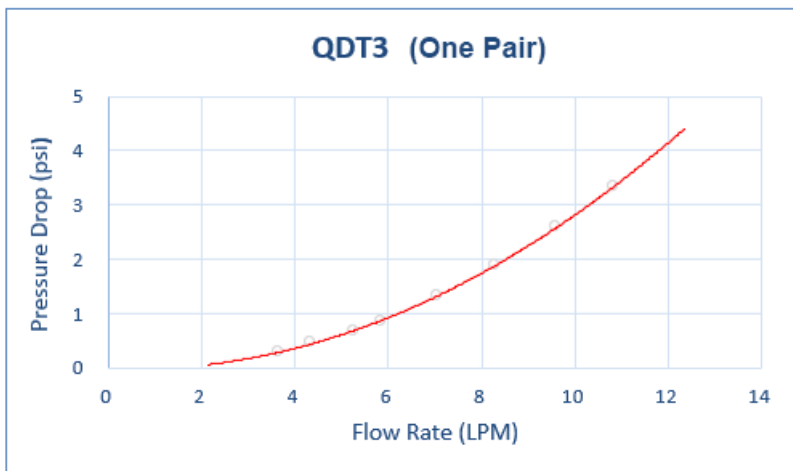
QDT3 EPDM Female Quick Disconnect No-Spill Coupling, Panel Barb for ID 13mm (1/2in)

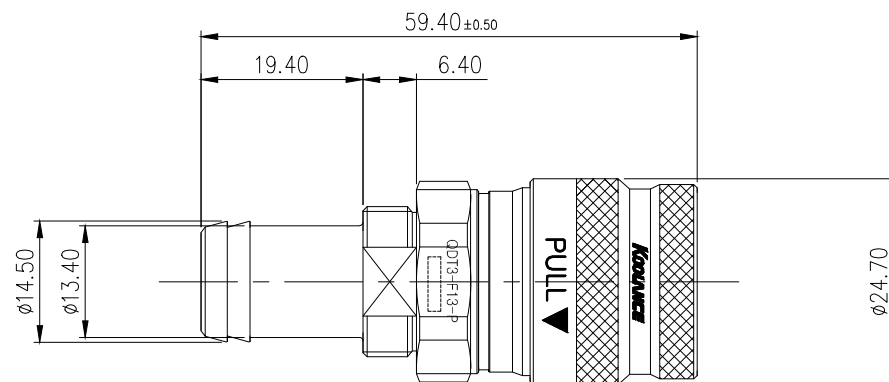
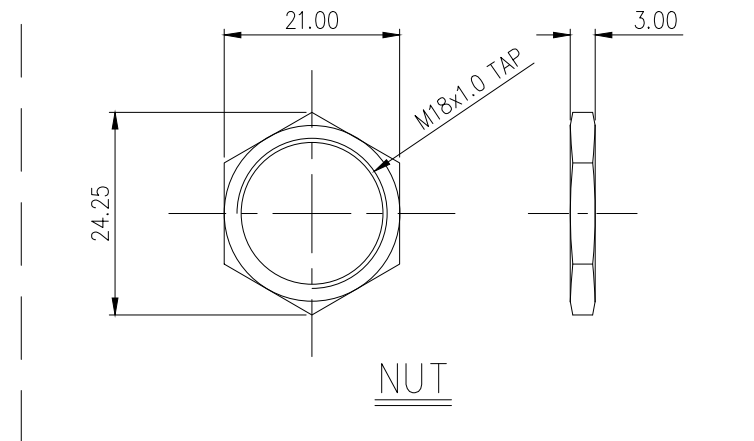



Koolance patented quick disconnect no-spill coupling with automatic shutoff. 13mm (1/2in) ID female panel-mountable hose barb with clamp for 16mm OD (5/8in). It will only fit a Koolance QDT3 male quick disconnect.

After pulling the ring on the female QDC side, the quick-disconnect fittings will separate. Liquid on both sides will be automatically obstructed with approximately 0.2ml freed.

General	
Weight	0.21 lb (0.10 kg)
Max No-Spill Pressure	10kgf/cm2 (142psi)
Max Pressure Tolerance @ 25 °C	12kgf/cm2 (170.7psi)
Max Temperature Tolerance	80 °C (176 °F)
Min Pressure Tolerance @ 25 °C	-1.0kgf/cm2 (-14psi)
Min Storage Temperature (*No Freezing)	-40°C (-40°F) Connected, -30°C (-22°F) Disconnected
Seal Material	EPDM (Water/Glycol Liquids)
Wetted Materials	Chrome-Plated Brass, Stainless Steel, EPDM





NO.		DESCRIPTION			MATER'L		QUANTITY		REMARKS	
 KOOLANCE®					UNIT	MM	PART NO. QDT3-F13-P			
					SCALE	N/S	TITLE			
DATE		BY	BY	BY	APPRO BY	3RD ANGLE		DIMENSION		
		S.J.LEE				DWG. NO.		ITEM		
								QDT3		