

QD3 Female Quick Disconnect No-Spill Coupling, Panel Barb for ID 10mm (3/8in)

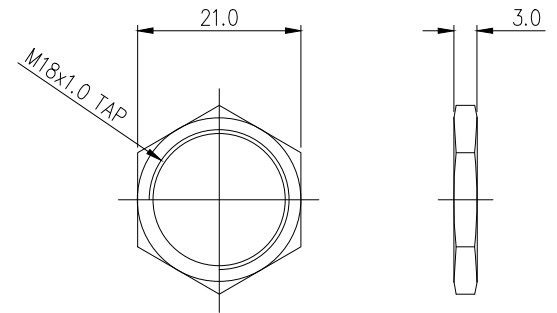
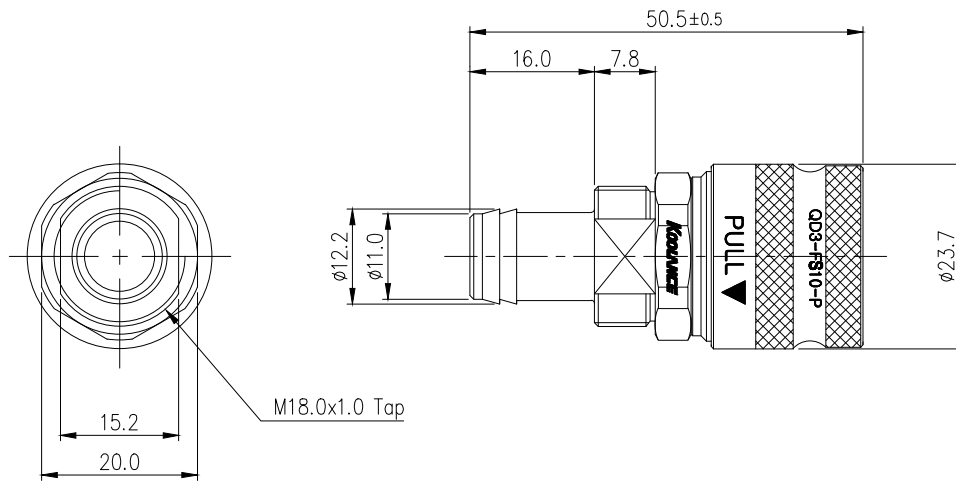


Koolance patented quick disconnect no-spill coupling with automatic shutoff. 10mm (3/8in) ID female panel-mountable hose barb with clamp for 13mm (1/2in) OD. It will only fit a Koolance QD3 male quick disconnect.

After pulling the ring on the female QDC side, the quick-disconnect fittings will separate. Liquid on both sides will be automatically obstructed with approximately 0.2ml freed. Coolant volume lost upon disconnection will rise with internal pressure higher than 0.5kgf/cm² (7psi).

General	
Weight	0.20 lb (0.09 kg)
Max No-Spill Pressure	0.5kgf/cm ² (7psi)
Max Pressure Tolerance @ 25° C	8kgf/cm ² (113.8psi)
Max Temperature Tolerance	80° C (176° F)
Min Pressure Tolerance @ 25° C	-1.0kgf/cm ² (-14psi)
Min Storage Temperature (*No Freezing)	-20° C (-4° F)
Seal Material	EPDM (Water/Glycol Liquids)
Wetted Materials	Brass, Nickel Plating, Stainless Steel, EPDM






NUT

REV	DATE	CONTENTS	REVD BY	CHKD BY	APPD BY

REVISION

NO.		DISCRIPTION				MATER'L		QUANTITY	REMARKS										
		<table><tr><td>DECIMAL PLACES</td><td>INCHES</td><td>MILLIMETRES</td></tr><tr><td>.XXX</td><td>±.005</td><td>±0.1</td></tr><tr><td>.XX</td><td>±.010</td><td>±0.3</td></tr><tr><td>.X</td><td>±.020</td><td>±0.5</td></tr></table>		DECIMAL PLACES	INCHES	MILLIMETRES	.XXX	±.005	±0.1	.XX	±.010	±0.3	.X	±.020	±0.5	UNIT	MM	ITEM	QD3
				DECIMAL PLACES	INCHES	MILLIMETRES													
				.XXX	±.005	±0.1													
				.XX	±.010	±0.3													
.X	±.020	±0.5																	
APPRO BY		SCALE	N/S	TITLE															
DATE		ANGULAR DIMENSIONS				3RD ANGLE		QD3-FS10-P											
SONG		<table><tr><td>XX"</td><td>±0.5"</td></tr><tr><td>XX.X"</td><td>±0.1"</td></tr></table>		XX"	±0.5"	XX.X"	±0.1"	CODE NO.		DWG. NO.	PAGE								
		XX"	±0.5"																
		XX.X"	±0.1"																
<table><tr><td>SURFACE ROUGHNESS</td><td>SURFACE</td><td>SURFACE</td></tr><tr><td></td><td>.63</td><td>1.6</td></tr></table>		SURFACE ROUGHNESS	SURFACE	SURFACE		.63	1.6												
SURFACE ROUGHNESS	SURFACE	SURFACE																	
	.63	1.6																	