

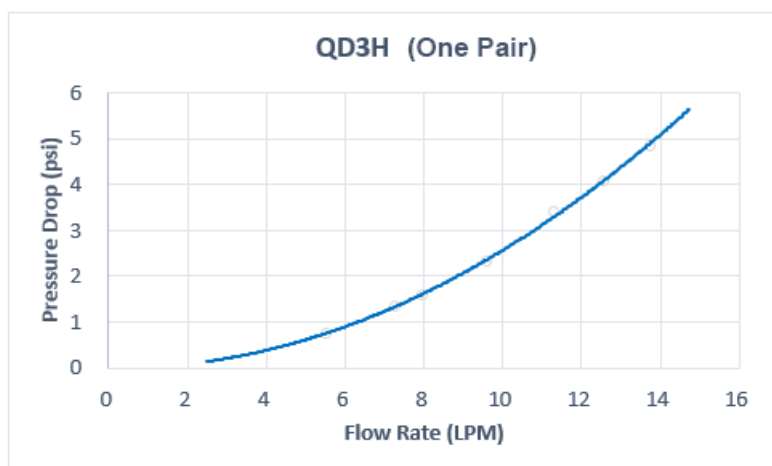
QD3H Female Quick Disconnect No-Spill Coupling, Panel Barb for ID 10mm (3/8in), Stainless Steel

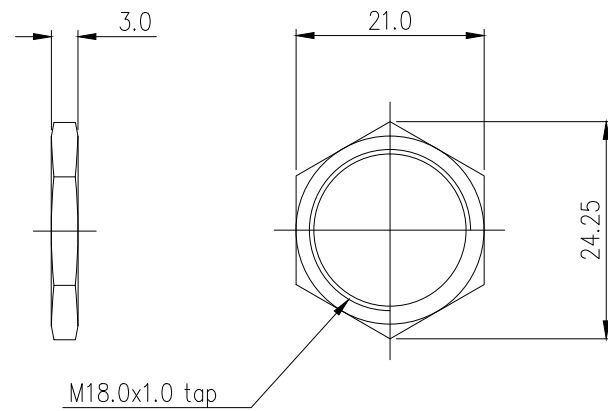
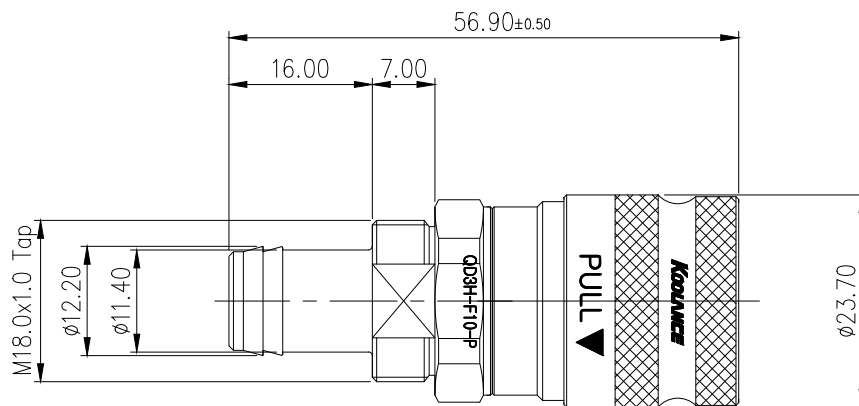
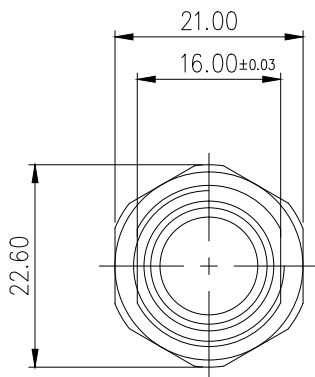


Koolance patented quick disconnect no-spill coupling with automatic shutoff. 10mm (3/8in) ID female panel-mountable hose barb with clamp for 13mm (1/2in) OD. It will only fit a Koolance QD3H male quick disconnect.

After pulling the ring on the female QDC side, the quick-disconnect fittings will separate. Liquid on both sides will be automatically obstructed with approximately 0.2ml freed. Coolant volume lost upon disconnection will rise with internal pressure higher than 10kgf/cm² (142psi).


| General | |
|--|----------------------------------|
| Weight | 0.20 lb (0.09 kg) |
| Max No-Spill Pressure | 10kgf/cm ² (142psi) |
| Max Pressure Tolerance @ 25°C | 12kgf/cm ² (170.7psi) |
| Max Temperature Tolerance | 80°C (176°F) |
| Min Pressure Tolerance @ 25°C | 0.0kgf/cm ² (0psi) |
| Min Storage Temperature (*No Freezing) | -20°C (-4°F) |
| Seal Material | EPDM (Water/Glycol Liquids) |
| Wetted Materials | SUS 304, EPDM |





NUT DIMENSION

| | | | |
|----------|------|----------|---------|
| | | | |
| | | | |
| | | | |
| | | | |
| REV | DATE | CONTENTS | APPD BY |
| REVISION | | | |

| | | | | | | | | | | |
|--|--|-------------|--|--|-----------|-----|---------------------|--|---------|--|
| | | | | | | | | | | |
| NO. | | DESCRIPTION | | | MATER'L | | QUANTITY | | REMARKS | |
|  KOOLANCE® | | | | | UNIT | MM | PART NO. QD3H-F10-P | | | |
| <div><div>DATE</div><div>BY</div><div>BY</div><div>BY</div><div>APPRO BY</div></div> | | | | | SCALE | N/S | TITLE | | | |
| | | | | | 3RD ANGLE | | DIMENSION | | | |
| song | | | | | DWG. NO. | | | | | |
| | | | | | | | QD3H | | | |