

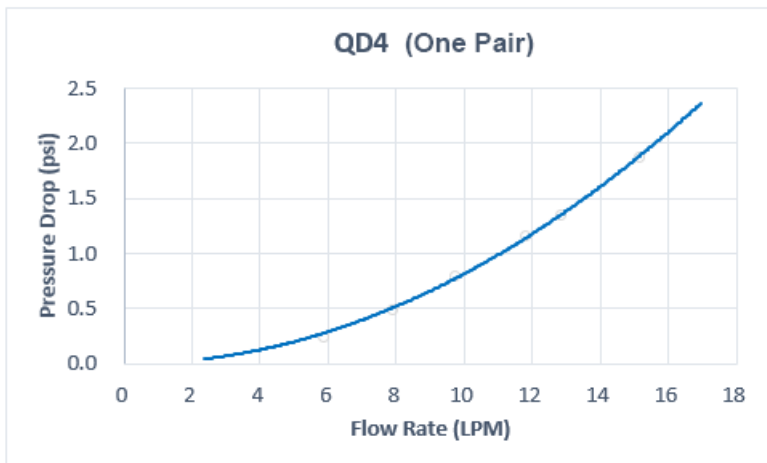
**QD4 Female Quick Disconnect No-Spill  
Coupling, Male Threaded G 3/8 BSPP**

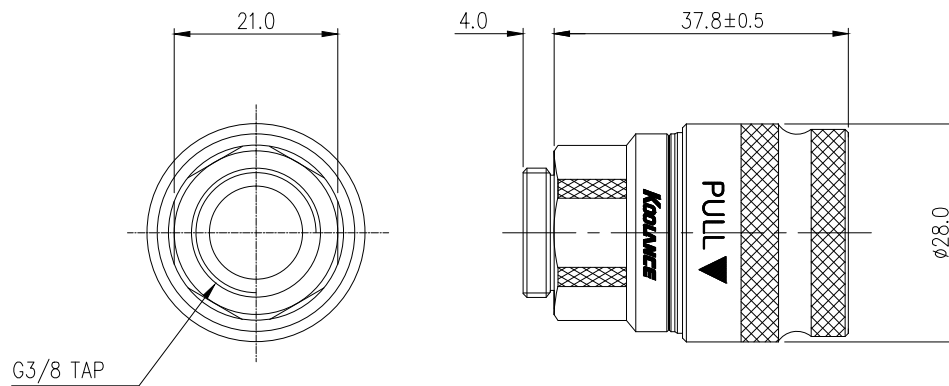


Koolance patented quick disconnect no-spill coupling with automatic shutoff. G 3/8 BSPP (parallel) thread female fitting for screwing directly into a water block or other component of same threading. It will only fit a Koolance QD4 male quick disconnect.

After pulling the ring on the female QDC side, the quick-disconnect fittings will separate. Liquid on both sides will be automatically obstructed with approximately 0.2ml freed. Coolant volume lost upon disconnection will rise with internal pressure higher than 0.5kgf/cm<sup>2</sup> (7psi).

General	
Weight	0.33 lb (0.15 kg)
Fitting Thread	G 3/8 BSPP
Max No-Spill Pressure	0.5kgf/cm <sup>2</sup> (7psi)
Max Pressure Tolerance @ 25° C	8kgf/cm <sup>2</sup> (113.8psi)
Max Temperature Tolerance	80° C (176° F)
Min Pressure Tolerance @ 25° C	-1.0kgf/cm <sup>2</sup> (-14psi)
Min Storage Temperature (*No Freezing)	-20° C (-4° F)
Seal Material	EPDM (Water/Glycol Liquids)
Wetted Materials	Brass, Nickel Plating, Stainless Steel, EPDM





REV	DATE	CONTENTS	REVD BY	CHKD BY	APPD BY
REVISION					

NO.	DISCRIPTION				MATER'L	QUANTITY	REMARKS
Koolance				DECIMAL PLACES	INCHES	MILLIMETRES	
				.XXX	±.005	±0.1	
				.XX	±.010	±0.3	
				.X	±.020	±0.5	
	BY	BY	BY	APPRO	BY	SCALE	N/S
DATE						3RD ANGLE	
	SONG					CODE NO.	
						DWG. NO.	
						PAGE	

QD4

QD4-FSG8

QD4-FSG8-BK