

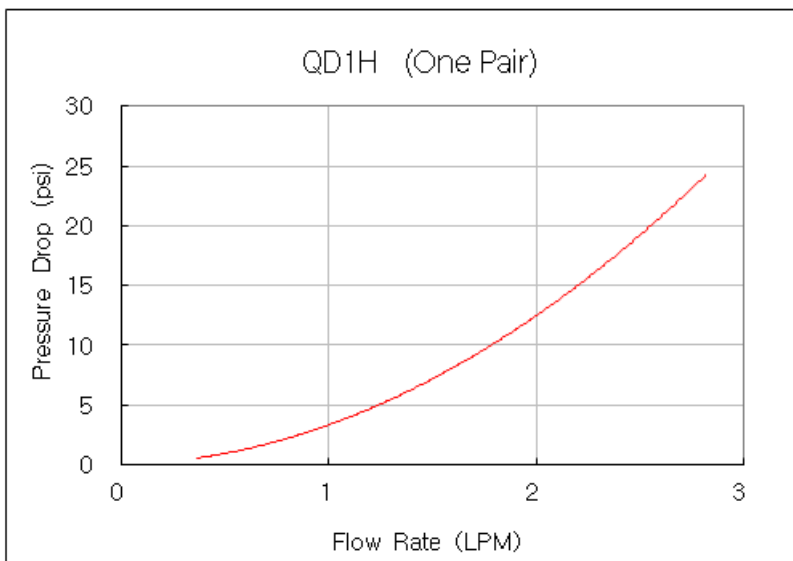
QD1H Male Quick Disconnect No-Spill Coupling, Panel Barb for 03mm (1/8in)

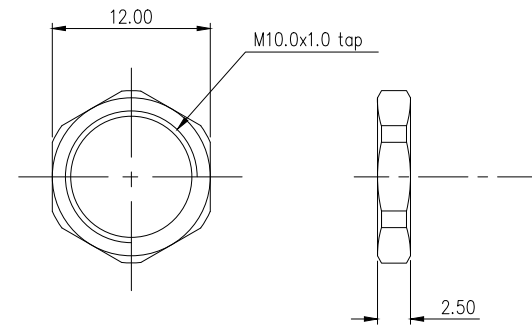
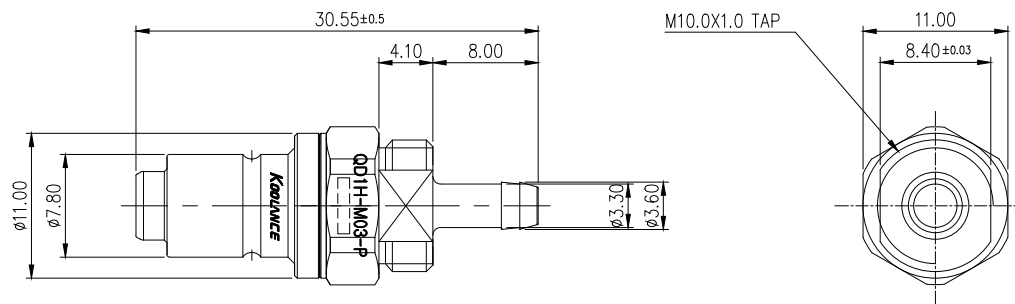


Koolance patented quick disconnect no-spill coupling with automatic shutoff. 3mm (1/8in) ID male panel-mountable hose barb with clamp for 5mm (3/16in) OD. It will only fit a Koolance QD1H female quick disconnect.

After pulling the ring on the female QDC side, the quick-disconnect fittings will separate. Liquid on both sides will be automatically obstructed with approximately 0.1ml freed. Coolant volume lost upon disconnection will rise with internal pressure higher than 10kgf/cm² (142psi).

General	
Weight	0.03 lb (0.01 kg)
Max No-Spill Pressure	10kgf/cm ² (142psi)
Max Pressure Tolerance @ 25° C	12kgf/cm ² (170.7psi)
Max Temperature Tolerance	80° C (176° F)
Min Pressure Tolerance @ 25° C	-1.0kgf/cm ² (-14psi)
Min Storage Temperature (*No Freezing)	-20° C (-4° F)
Seal Material	EPDM (Water/Glycol Liquids)
Wetted Materials	Nickel-Plated Brass, Stainless Steel, EPDM






NUT

REV	DATE	CONTENTS	REVD BY	CHKD BY	APPD BY

REVISION

NO.	DESCRIPTION				MATER'L		QUANTITY	REMARKS
					UNIT	MM	QD1H	
					SCALE	N/S	TITLE	
					3RD ANGLE		QD1H-M03-P	
					CODE NO.		DWG. NO.	PAGE
DATE	BY	BY	BY	APPRO BY				
	SONG							
					SURFACE ROUGHNESS			