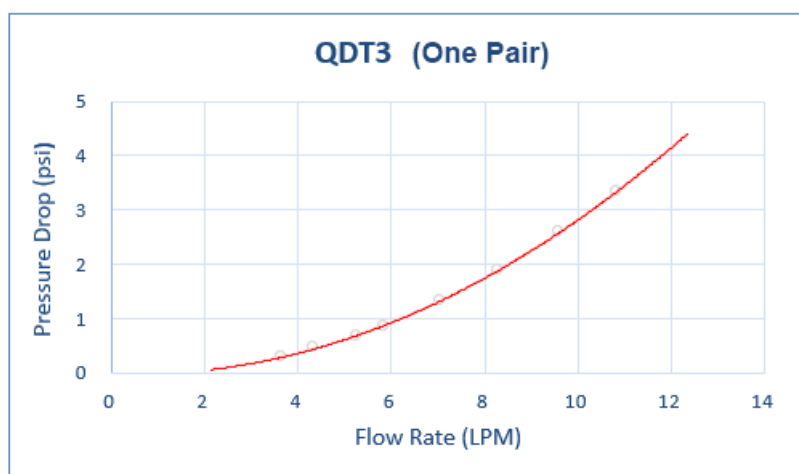


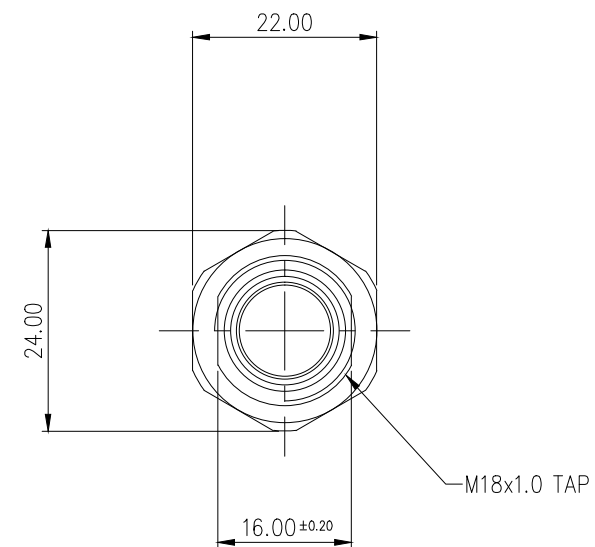
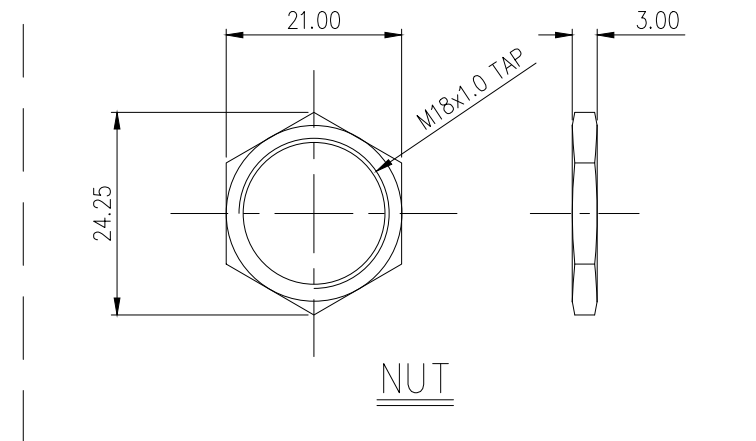
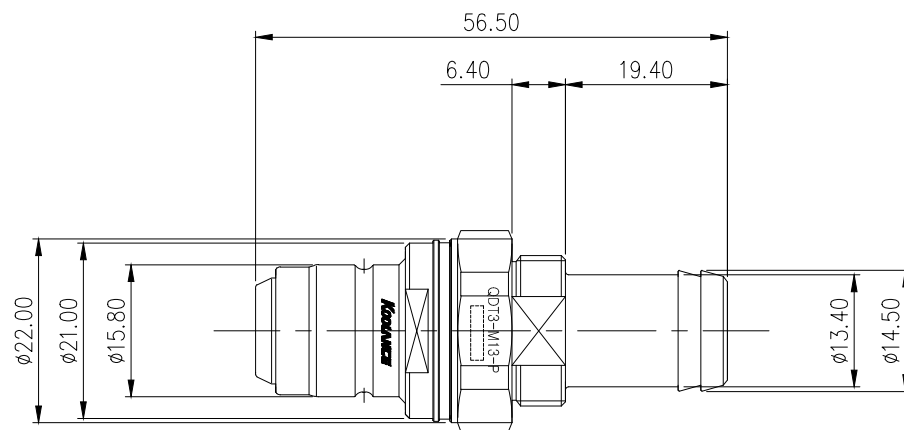
**QDT3 EPDM Male Quick Disconnect No-Spill Coupling, Panel Barb for ID 13mm (1/2in)**



Koolance patented quick disconnect no-spill coupling with automatic shutoff. 13mm (1/2in) ID male panel-mountable hose barb with clamp for 16mm (5/8in) OD. It will only fit a Koolance QDT3 female quick disconnect.

After pulling the ring on the female QDC side, the quick-disconnect fittings will separate. Liquid on both sides will be automatically obstructed with approximately 0.2ml freed.

General	
Weight	0.13 lb (0.06 kg)
Max No-Spill Pressure	10kgf/cm2 (142psi)
Max Pressure Tolerance @ 25 °C	12kgf/cm2 (170.7psi)
Max Temperature Tolerance	80 °C (176 °F)
Min Pressure Tolerance @ 25 °C	-1.0kgf/cm2 (-14psi)
Min Storage Temperature (*No Freezing)	-40°C (-40°F) Connected, -30°C (-22°F) Disconnected
Seal Material	EPDM (Water/Glycol Liquids)
Wetted Materials	Chrome-Plated Brass, Stainless Steel, EPDM





NO.	DESCRIPTION				MATER'L	QUANTITY	REMARKS
 <b>KOOLANCE®</b>					UNIT	MM	PART NO. QDT3-M13-P
					SCALE	N/S	TITLE
DATE	BY	BY	BY	APPRO BY	DIMENSION		
					3RD ANGLE		
	S.J.LEE				DWG. NO.	ITEM QDT3	