

QD3 Male Quick Disconnect No-Spill Coupling, Panel Barb for ID 10mm (3/8in)

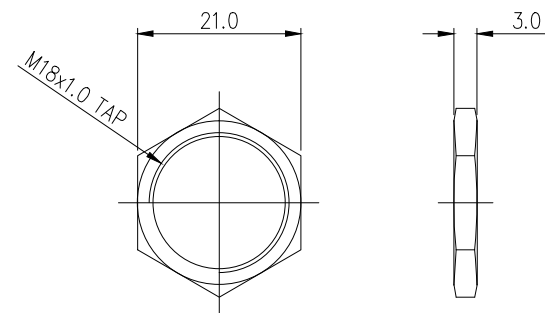
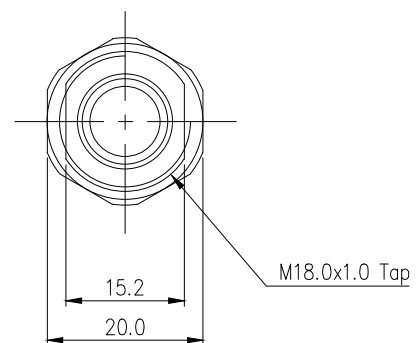
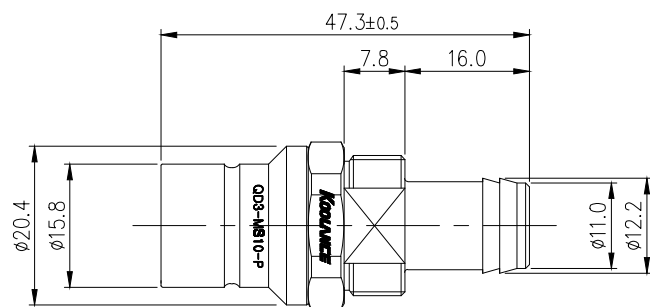


Koolance patented quick disconnect no-spill coupling with automatic shutoff. 10mm (3/8in) ID male panel-mountable barb fitting with spring clamp for 13mm (1/2in) OD. It will only fit a Koolance QD3 female quick disconnect.

After pulling the ring on the female QDC side, the quick-disconnect fittings will separate. Liquid on both sides will be automatically obstructed with approximately 0.2ml freed. Coolant volume lost upon disconnection will rise with internal pressure higher than 0.5kgf/cm² (7psi).


General	
Weight	0.13 lb (0.06 kg)
Max No-Spill Pressure	0.5kgf/cm ² (7psi)
Max Pressure Tolerance @ 25° C	8kgf/cm ² (113.8psi)
Max Temperature Tolerance	80° C (176° F)
Min Pressure Tolerance @ 25° C	-1.0kgf/cm ² (-14psi)
Min Storage Temperature (*No Freezing)	-20° C (-4° F)
Seal Material	EPDM (Water/Glycol Liquids)
Wetted Materials	Brass, Nickel Plating, Stainless Steel, EPDM





NUT

REV	DATE	CONTENTS	REVD BY	CHKD BY	APPD BY
REVISION					

NO.		DISCRPTION					MATER'L		QUANTITY		REMARKS	
		DECIMAL PLACES			INCHES		MILLIMETRES		UNIT	MM	ITEM QD3	
		.XXX			±.005		±0.1					
		.XX			±.010		±0.3					
		.X			±.020		±0.5					
		BY	BY	BY	APPRO	BY	SCALE		N/S	TITLE QD3-MS10-P		
DATE		ANGULAR DIMENSIONS					3RD ANGLE					
		XX" XX.X"			±0.5" ±0.1"		CODE NO.		DWG. NO.			
SONG									PAGE			
		SURFACE ROUGHNESS			SURFACE .63		SURFACE 1.6					