

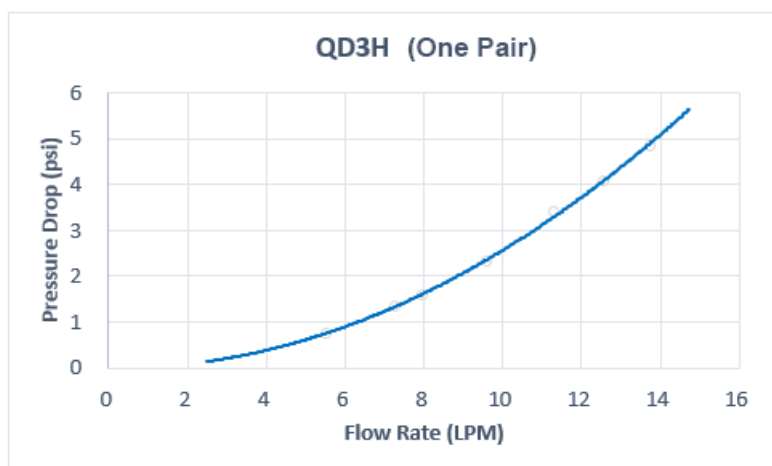
## QD3H Male Quick Disconnect No-Spill Coupling, Panel Barb for ID 10mm (3/8in)

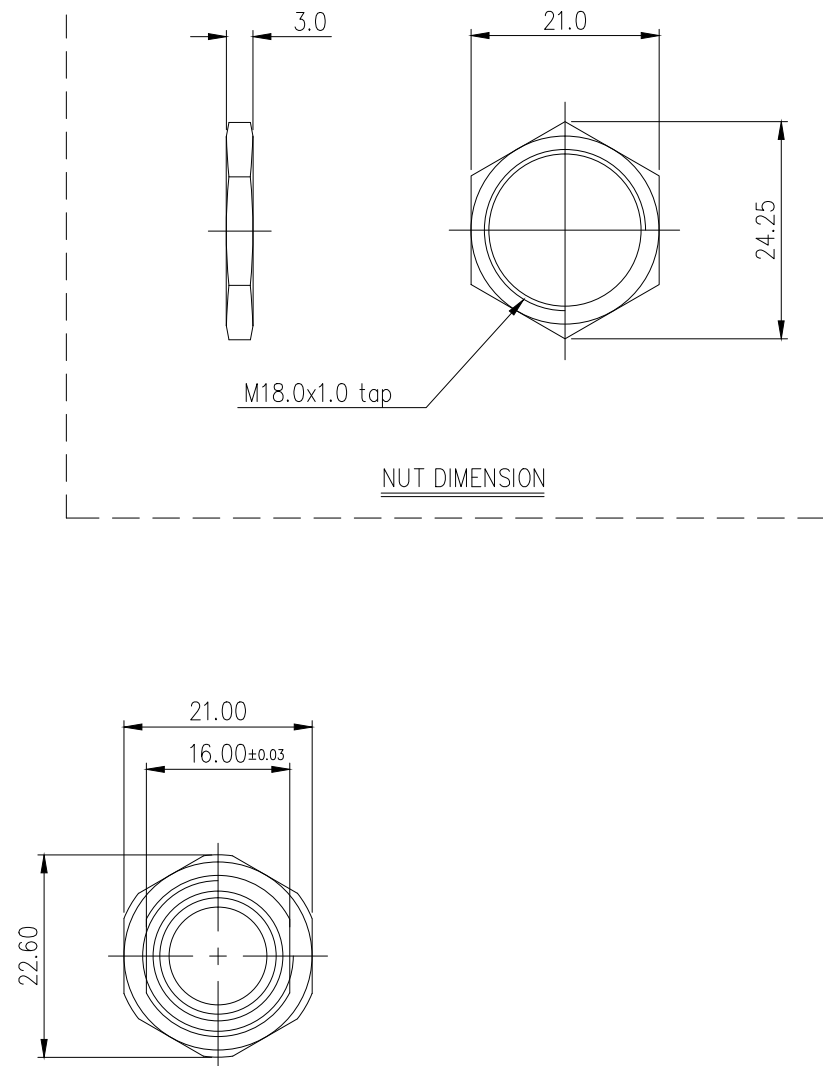
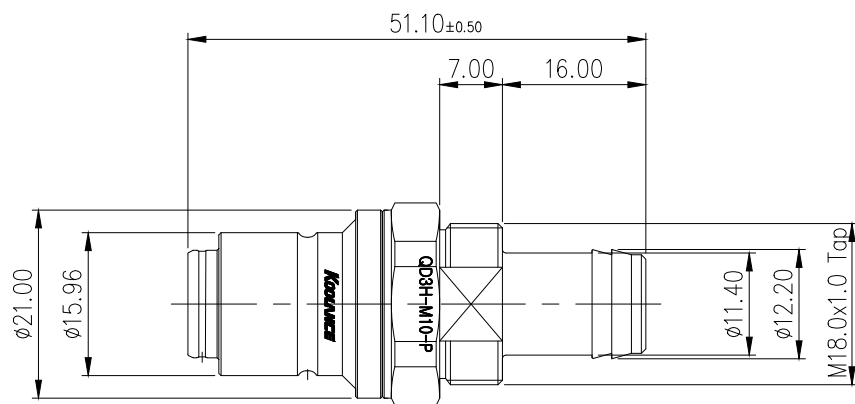



Koolance patented quick disconnect no-spill coupling with automatic shutoff. 10mm (3/8in) ID male panel-mountable hose barb with clamp for 13mm (1/2in) OD. It will only fit a Koolance QD3H female quick disconnect.

After pulling the ring on the female QDC side, the quick-disconnect fittings will separate. Liquid on both sides will be automatically obstructed with approximately 0.2ml freed. Coolant volume lost upon disconnection will rise with internal pressure higher than 10kgf/cm<sup>2</sup> (142psi).

General	
Weight	0.13 lb (0.06 kg)
Max No-Spill Pressure	10kgf/cm <sup>2</sup> (142psi)
Max Pressure Tolerance @ 25° C	12kgf/cm <sup>2</sup> (170.7psi)
Max Temperature Tolerance	80° C (176° F)
Min Pressure Tolerance @ 25° C	0.0kgf/cm <sup>2</sup> (0psi)
Min Storage Temperature (*No Freezing)	-20° C (-4° F)
Seal Material	EPDM (Water/Glycol Liquids)
Wetted Materials	Brass, Nickel Plating, Stainless Steel, EPDM





NO.		DESCRIPTION			MATER'L		QUANTITY	REMARKS
 <b>KOOLANCE®</b>					UNIT	MM	PART NO. QD3H-M10-P	
<div> <div>DATE</div> <div>BY</div> <div>BY</div> <div>BY</div> <div>APPRO BY</div> </div>					SCALE	N/S	TITLE  DIMENSION	
					3RD ANGLE			
song					DWG. NO.		ITEM	
							QD3H	