

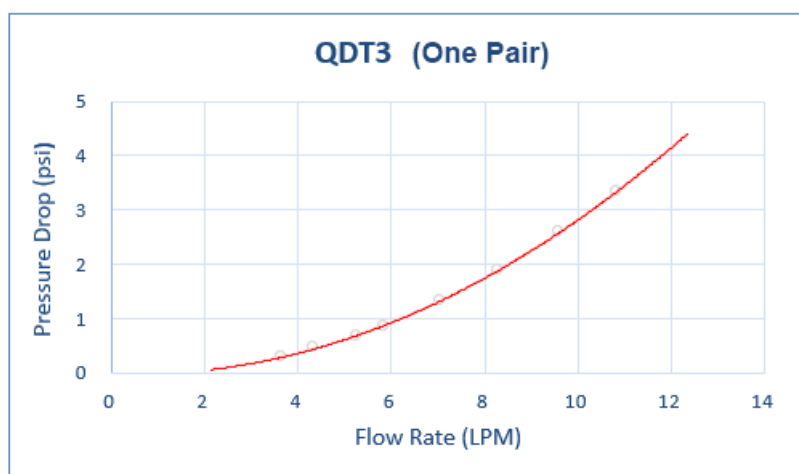
QDT3 Viton Male Quick Disconnect No-Spill Coupling, Panel Barb for ID 10mm (3/8in)

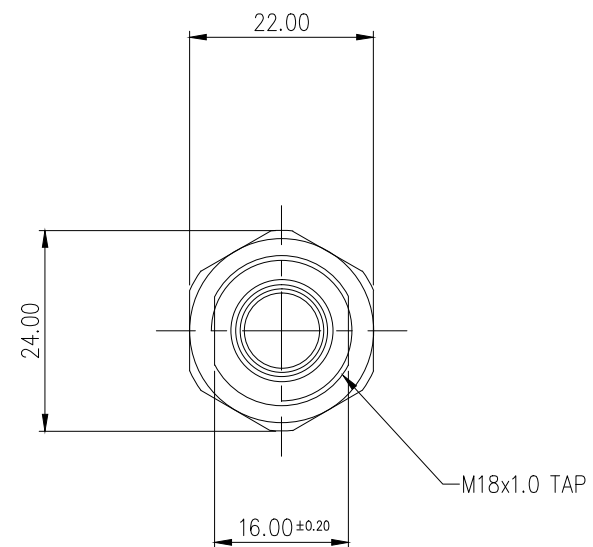
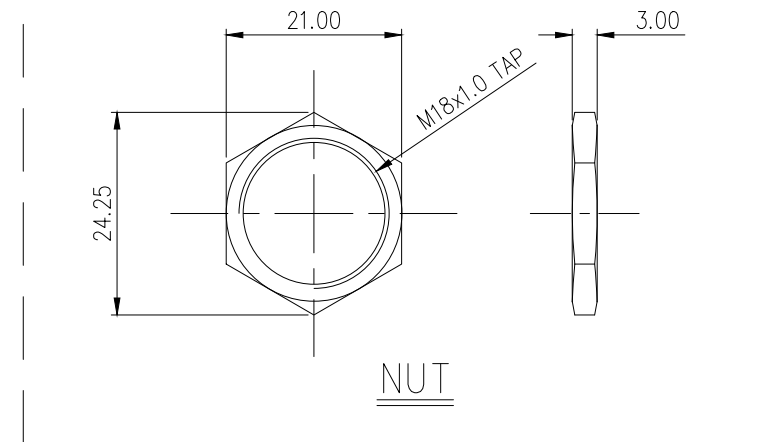
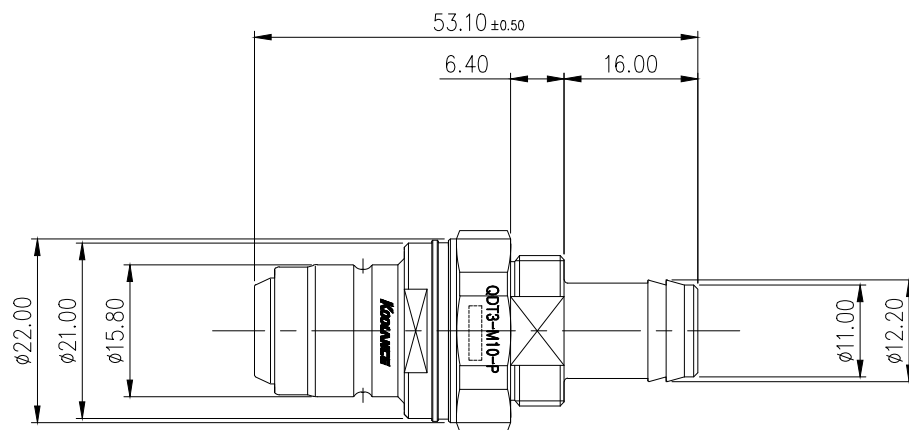



Koolance patented quick disconnect no-spill coupling with automatic shutoff. 10mm (3/8in) ID male panel-mountable hose barb with clamp for 13mm (1/2in) OD. It will only fit a Koolance QDT3 female quick disconnect.

After pulling the ring on the female QDC side, the quick-disconnect fittings will separate. Liquid on both sides will be automatically obstructed with approximately 0.2ml freed.

| General | |
|--|---|
| Weight | 0.13 lb (0.06 kg) |
| Max No-Spill Pressure | 10kgf/cm2 (142psi) |
| Max Pressure Tolerance @ 25 °C | 12kgf/cm2 (170.7psi) |
| Max Temperature Tolerance | 80 °C (176 °F) |
| Min Pressure Tolerance @ 25 °C | -1.0kgf/cm2 (-14psi) |
| Min Storage Temperature (*No Freezing) | -40°C (-40°F) Connected, -30°C (-22°F) Disconnected |
| Seal Material | Viton (Oil Liquids) |
| Wetted Materials | Chrome-Plated Brass, Stainless Steel, Viton |





| | | | | | | | | |
|--|---------|-------------|----|-------------|-----------|-----|---------------------|---------|
| NO. | | DESCRIPTION | | | MATER'L | | QUANTITY | REMARKS |
|  KOOLANCE® | | | | | UNIT | MM | PART NO. QDT3-M10-P | |
| | | | | | SCALE | N/S | TITLE | |
| DATE | BY | BY | BY | APPRO BY | 3RD ANGLE | | DIMENSION | |
| | S.J.LEE | | | | DWG. NO. | | ITEM | |
| | | | | | | | QDT3 | |