

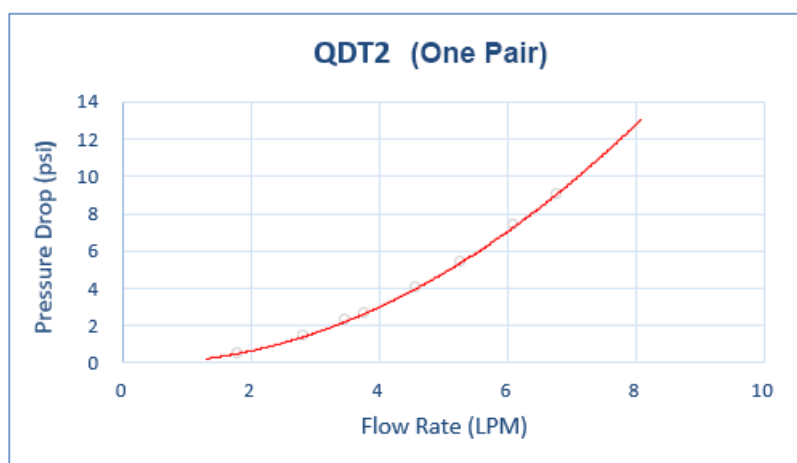
QDT2 EPDM Male Quick Disconnect No-Spill Coupling, Panel Barb for ID 06mm (1/4in)

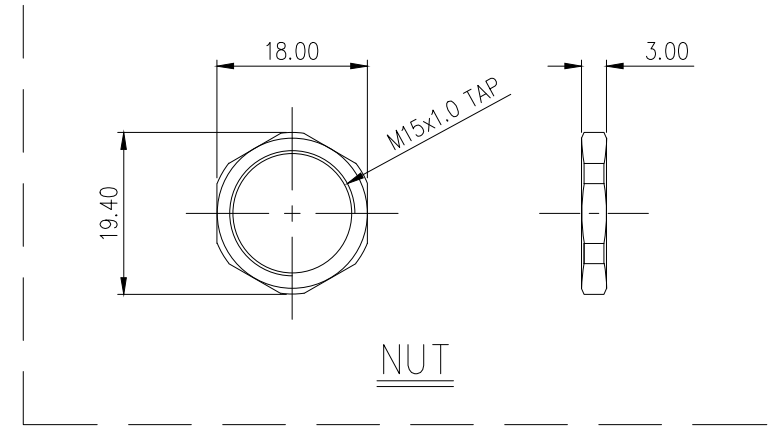
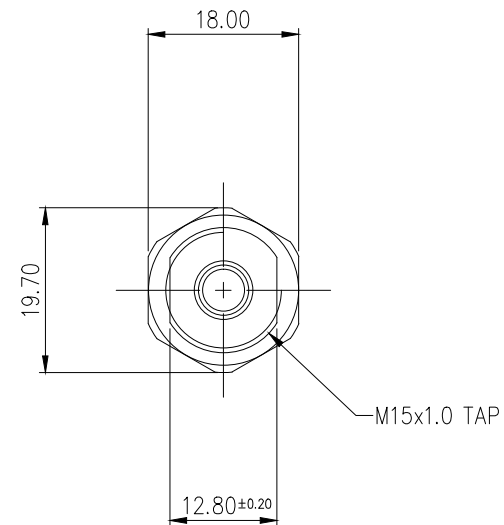



Koolance patented quick disconnect no-spill coupling with automatic shutoff. 6mm (1/4in) ID male panel-mountable hose barb with clamp for 10mm (3/8in) OD. It will only fit a Koolance QDT2 female quick disconnect.

After pulling the ring on the female QDC side, the quick-disconnect fittings will separate. Liquid on both sides will be automatically obstructed with approximately 0.2ml freed.

General	
Weight	0.08 lb (0.04 kg)
Max No-Spill Pressure	10kgf/cm2 (142psi)
Max Pressure Tolerance @ 25 °C	12kgf/cm2 (170.7psi)
Max Temperature Tolerance	80 °C (176 °F)
Min Pressure Tolerance @ 25 °C	-1.0kgf/cm2 (-14psi)
Min Storage Temperature (*No Freezing)	-40°C (-40°F) Connected, -30°C (-22°F) Disconnected
Seal Material	EPDM (Water/Glycol Liquids)
Wetted Materials	Chrome-Plated Brass, Stainless Steel, EPDM





NO.		DESCRIPTION			MATER'L		QUANTITY	REMARKS
					UNIT	MM	PART NO. QDT2-M06-P	
					SCALE	N/S	TITLE	
DATE	BY	BY	BY	APPRO BY	3RD ANGLE		DIMENSION	
	S.JLEE				DWG. NO.		ITEM	
							QDT2	