

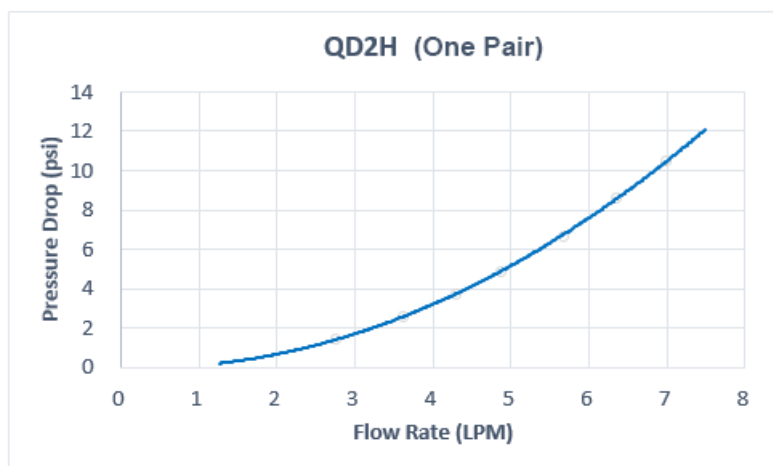
## QD2H Male Quick Disconnect No-Spill Coupling, Male Threaded G 1/4 BSPP

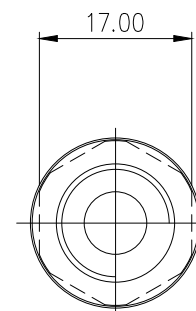
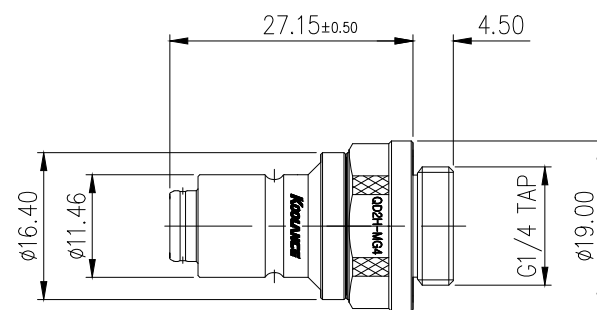


Koolance patented quick disconnect no-spill coupling with automatic shutoff. G 1/4 BSPP (parallel) thread male fitting for screwing directly into a water block or other component. It will only fit a Koolance QD2H female quick disconnect.

After pulling the ring on the female QDC side, the quick-disconnect fittings will separate. Liquid on both sides will be automatically obstructed with approximately 0.2ml freed. Coolant volume lost upon disconnection will rise with internal pressure higher than 10kgf/cm<sup>2</sup> (142psi).

General	
Weight	0.08 lb (0.04 kg)
Fitting Thread	G 1/4 BSPP
Max No-Spill Pressure	10kgf/cm <sup>2</sup> (142psi)
Max Pressure Tolerance @ 25° C	12kgf/cm <sup>2</sup> (170.7psi)
Max Temperature Tolerance	80° C (176° F)
Min Pressure Tolerance @ 25° C	-1.0kgf/cm <sup>2</sup> (-14psi)
Min Storage Temperature (*No Freezing)	-20° C (-4° F)
Seal Material	EPDM (Water/Glycol Liquids)
Wetted Materials	Nickel-Plated Brass, Stainless Steel, EPDM





REV	DATE	CONTENTS	APPD BY
REVISION			

NO.		DESCRIPTION		MATER'L	
		UNIT		MM	
		SCALE		N/S	
DATE		BY	BY	BY	APPRD BY
		3RD ANGLE		TITLE	
		DWG. NO.		ITEM	
				QD2H	