

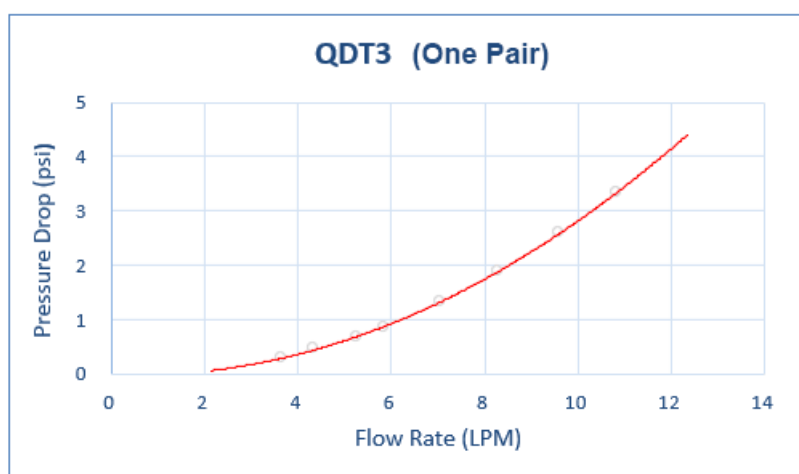
QDT3 EPDM Male Quick Disconnect No-Spill Coupling, Male Threaded G 1/4 BSPP

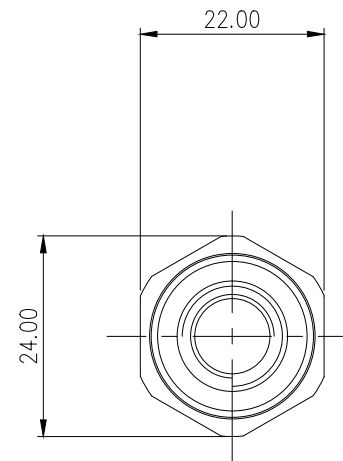



Koolance patented quick disconnect no-spill coupling with automatic shutoff. G 1/4 BSPP (parallel) thread male fitting for screwing directly into a water block or other component. It will only fit a Koolance QDT3 female quick disconnect.

After pulling the ring on the female QDC side, the quick-disconnect fittings will separate. Liquid on both sides will be automatically obstructed with approximately 0.2ml freed.

General	
Weight	0.11 lb (0.05 kg)
Fitting Thread	G 1/4 BSPP
Max No-Spill Pressure	10kgf/cm2 (142psi)
Max Pressure Tolerance @ 25°C	12kgf/cm2 (170.7psi)
Max Temperature Tolerance	80°C (176°F)
Min Pressure Tolerance @ 25°C	-1.0kgf/cm2 (-14psi)
Min Storage Temperature (*No Freezing)	-40°C (-40°F) Connected, -30°C (-22°F) Disconnected
Seal Material	EPDM (Water/Glycol Liquids)
Wetted Materials	Chrome-Plated Brass, Stainless Steel, EPDM





NO.		DESCRIPTION			MATER'L		QUANTITY	REMARKS
 KOOLANCE®					UNIT	MM	PART NO. QDT3-MG4	
					SCALE	N/S	TITLE DIMENSION	
DATE	BY	BY	BY	APPRO BY	3RD ANGLE			
	S.J.LEE				DWG. NO.		ITEM QDT3	