

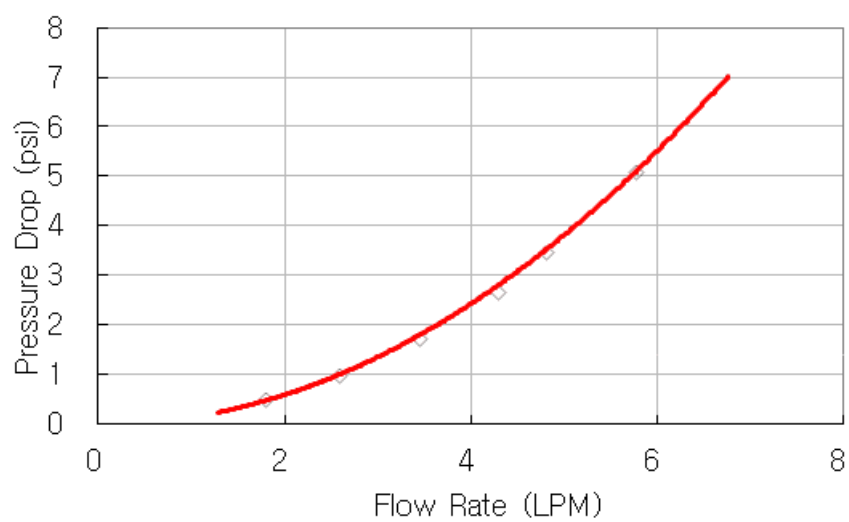
**QD2 Male Quick Disconnect No-Spill Coupling,
Male Threaded, 1/4 NPT**

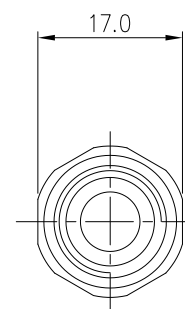
Koolance patented quick disconnect no-spill coupling with automatic shutoff. 1/4 NPT (tapered) male fitting for screwing directly into a component of the same threading. It will only fit a Koolance QD2 female quick disconnect.


After pulling the ring on the female QDC side, the quick-disconnect fittings will separate. Liquid on both sides will be automatically obstructed with approximately 0.2ml freed. Coolant volume lost upon disconnection will rise with internal pressure higher than 0.5kgf/cm² (7psi).

General	
Weight	0.08 lb (0.04 kg)
Fitting Thread	NPT 1/4
Max No-Spill Pressure	0.5kgf/cm ² (7psi)
Max Pressure Tolerance @ 25°C	8kgf/cm ² (113.8psi) connected, 8kgf/cm ² (113.8psi) disconnected
Max Temperature Tolerance	80°C (176°F)
Min Pressure Tolerance @ 25°C	-1.0kgf/cm ² (-14psi)
Min Storage Temperature (*No Freezing)	-20°C (-4°F)
Seal Material	EPDM (Water/Glycol Liquids)
Wetted Materials	Nickel-Plated Brass, Stainless Steel, EPDM

QD2 (One Pair)





NO.		DISCRPTION					MATER'L		QUANTITY	REMARKS	
		DECIMAL PLACES		INCHES	MILLIMETRES	UNIT	MM	ITEM	QD2 SHORT		
		.XXX .XX .X		±.005 ±.010 ±.020	±0.1 ±0.3 ±0.5	SCALE	N/S	TITLE	QD2-MSN14		
		ANGULAR DIMENSIONS					3RD ANGLE				
DATE	BY	BY	BY	APPRO BY	"X" XX.X"		±0.5" ±0.1"		CODE NO.	DWG. NO.	PAGE
	SONG				SURFACE ROUGHNESS		SURFACE SURFACE				
					.63		1.6				