

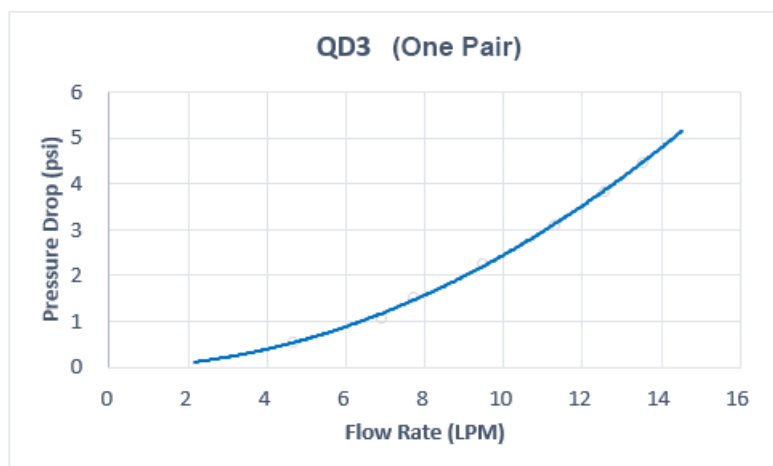
## QD3 Male Quick Disconnect No-Spill Coupling, Male Threaded, 1/4 NPT

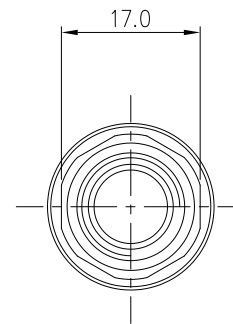
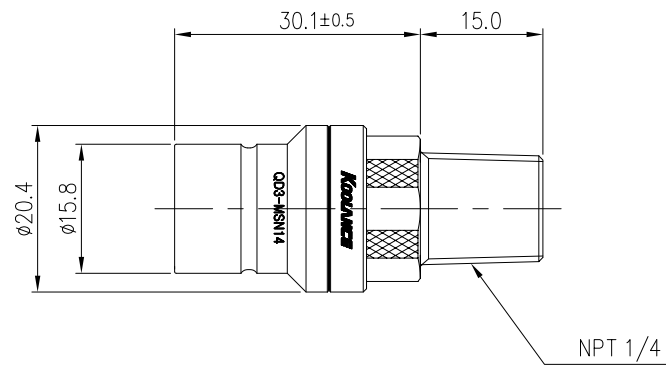


Koolance patented quick disconnect no-spill coupling with automatic shutoff. 1/4 NPT (tapered) threaded male fitting for screwing directly into a component of the same threading. It will only fit a Koolance QD3 female quick disconnect.


After pulling the ring on the female QDC side, the quick-disconnect fittings will separate. Liquid on both sides will be automatically obstructed with approximately 0.2ml freed. Coolant volume lost upon disconnection will rise with internal pressure higher than 0.5kgf/cm<sup>2</sup> (7psi).

General	
Weight	0.11 lb (0.05 kg)
Fitting Thread	NPT 1/4
Max No-Spill Pressure	0.5kgf/cm <sup>2</sup> (7psi)
Max Pressure Tolerance @ 25° C	8kgf/cm <sup>2</sup> (113.8psi)
Max Temperature Tolerance	80° C (176° F)
Min Pressure Tolerance @ 25° C	-1.0kgf/cm <sup>2</sup> (-14psi)
Min Storage Temperature (*No Freezing)	-20° C (-4° F)
Seal Material	EPDM (Water/Glycol Liquids)
Wetted Materials	Brass, Nickel Plating, Stainless Steel, EPDM





REV	DATE	CONTENTS	REVD BY	CHKD BY	APPD BY
REVISION					

NO.		DISCRIPTION					MATER'L		QUANTITY	REMARKS
		DECIMAL PLACES	INCHES	MILLIMETRES	UNIT	MM	ITEM QD3 SHORT			
		.XXX .XX .X	±.005 ±.010 ±.020	±0.1 ±0.3 ±0.5	SCALE	N/S	TITLE QD3-MSN14			
		ANGULAR DIMENSIONS				3RD ANGLE				
DATE		BY	BY	BY	APPRO BY	XX° XX.X°	±0.5° ±0.1°	CODE NO.	DWG. NO.	PAGE
SONG						SURFACE ROUGHNESS	SURFACE .63 SURFACE 1.6			