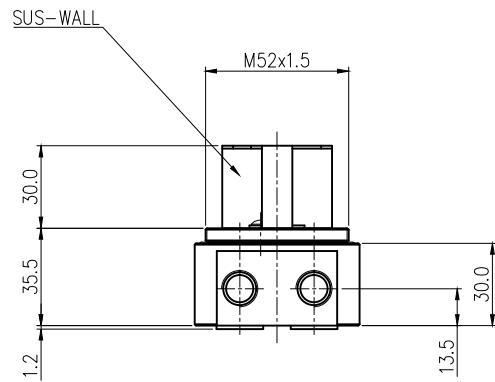
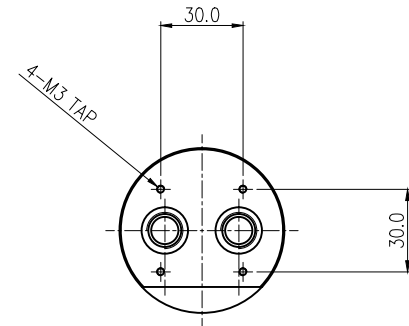
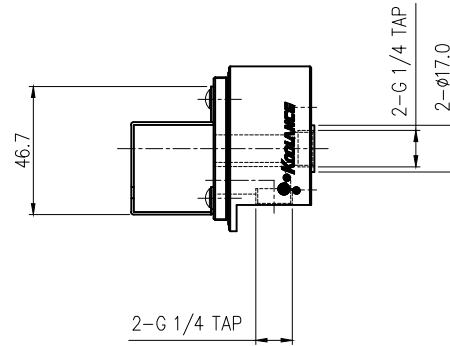
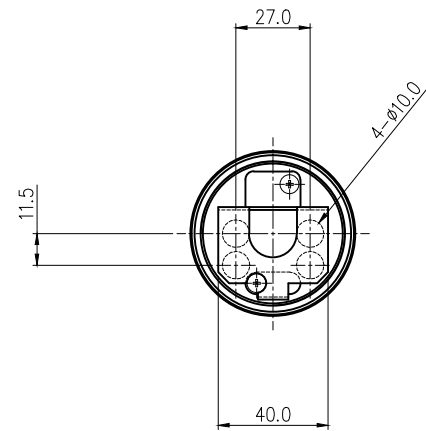




Acetal fitting base for Koolance [60mm OD reservoir bodies](#). Redundant inlet and outlets are provided for inline or parallel loops. Two nickel-plated brass socket plugs, a reservoir o-ring, and removable stainless steel partition are included.

General	
Weight	0.30 lb (0.14 kg)
Fitting Thread	G 1/4 BSPP
Max Pressure Tolerance @ 25° C	2kgf/cm2 (28.5psi)
Max Temperature Tolerance	80° C (176° F)



Δ	REV	DATE	CONTENTS	REVD BY	CHKD BY
					APPD BY
REVISION					

NO.		DESCRIPTION			MATER'L		QUANTITY	REMARKS
<b>KOOLANCE</b>					UNIT	MM	APPAR COV-TKBTM	
					SCALE	N/S	TITLE	
DATE		BY	BY	BY	APPRO BY	SUS-wall version Ass'y		
					3RD ANGLE			
S.J.LEE					REF. NO.		DWG. NO.	