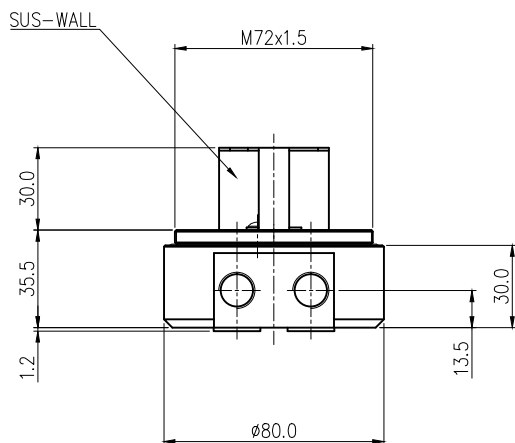
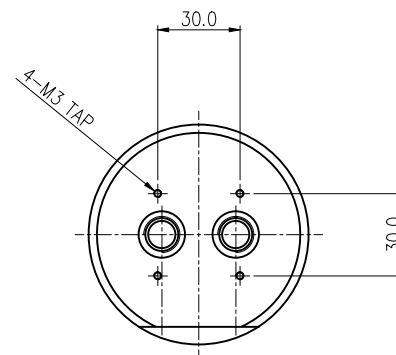
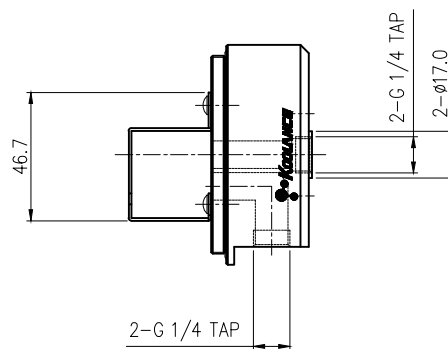
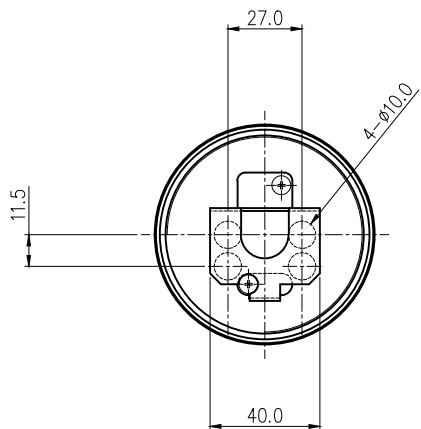






Acetal fitting base for Koolance [80mm OD reservoir bodies](#). Redundant inlet and outlets are provided for inline or parallel loops. Two nickel-plated brass socket plugs, a reservoir o-ring, and removable stainless steel partition are included.

General	
Weight	0.65 lb (0.29 kg)
Fitting Thread	G 1/4 BSPP
Max Pressure Tolerance @ 25°C	2kgf/cm2 (28.5psi)
Max Temperature Tolerance	80°C (176°F)



						
REV	DATE	CONTENTS	REVD BY	CHKD BY	APPD BY	
REVISION						

NO.		DESCRIPTION			MATER'L		QUANTITY	REMARKS
					UNIT	MM	APPAR	COV-TKBTMX70
DATE		BY	BY	BY	APPRO BY	SCALE	N/S	TITLE
						3RD ANGLE		SUS-wall version Ass'y
		S.J.LEE				REF. NO.		DWG. NO.