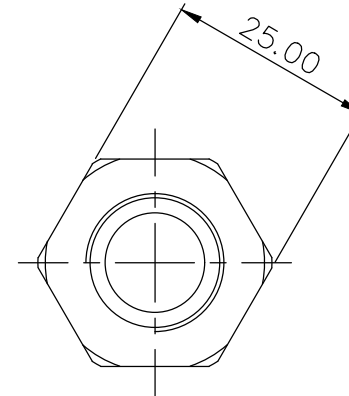
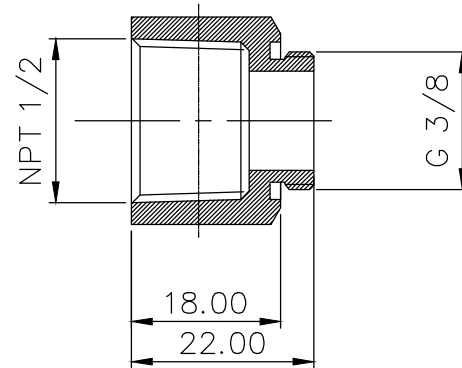
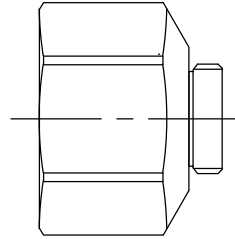





Single fitting threading adapter, from NPT 1/2 (female) to G 3/8 BSPP (male).

General	
Weight	0.11 lb (0.05 kg)
Fitting Thread	NPT 1/2, G 3/8 BSPP
Max Pressure Tolerance @ 25° C	15kgf/cm2 (213.4psi)
Max Temperature Tolerance	120° C (248° F)
Wetted Materials	Brass, Nickel Plating



NO.		DESCRIPTION				MATER'L		QUANTITY	REMARKS
						UNIT	MM	PART NO. ADT-N12F-G38M	
						SCALE	N/S	TITLE F-M Type (NPT1/2-G3/8)	
						3RD ANGLE			
DATE	BY	BY	BY	APPRO	BY	DWG. NO.		ITEM	
	ys.shin								