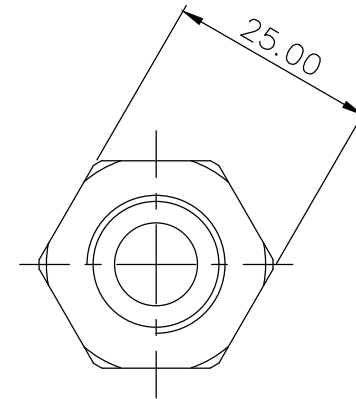
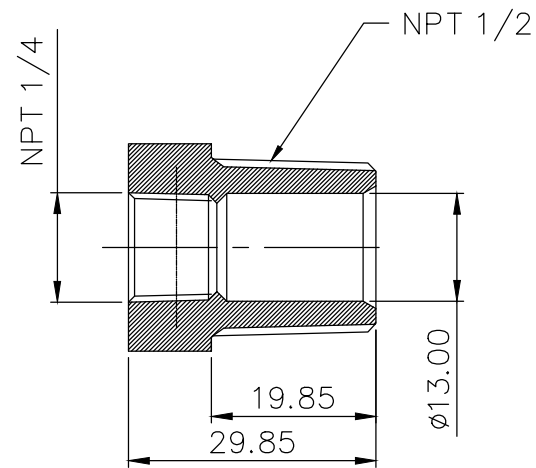
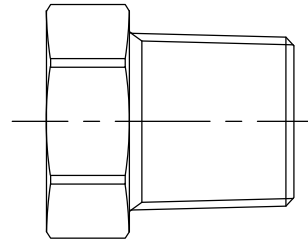



**Threading Adapter, NPT 1/4 Female to NPT 1/2 Male**



Single fitting threading adapter, from NPT 1/4 (female) to NPT 1/2 (male).

General	
Weight	0.17 lb (0.08 kg)
Fitting Thread	NPT 1/4, NPT 1/2
Max Pressure Tolerance @ 25° C	15kgf/cm2 (213.4psi)
Max Temperature Tolerance	120° C (248° F)
Wetted Materials	Brass, Nickel Plating



NO.		DESCRIPTION			MATER'L		QUANTITY	REMARKS
					UNIT	MM	PART NO. ADT-N14F-N12M	
					SCALE	N/S	TITLE	
DATE	BY	BY	BY	APPRO BY	F-M Type (NPT1/4-NPT/2)			
	ys.shin				3RD ANGLE			
					DWG. NO.		ITEM	