

P/N: HOS-10X13PU-CL-15M

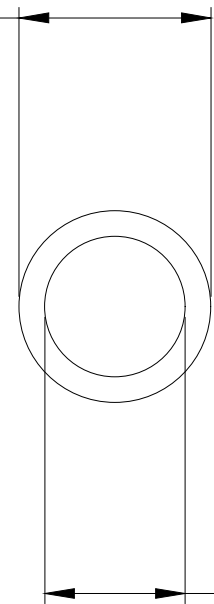
Tubing, PU Clear, Dia: 10mm x 13mm (3/8in x 1/2in) - [Length 15m / 49.2ft]



Koolance clear polyurethane tubing with 10mm (3/8in) internal diameter, 13mm (1/2in) external diameter. Length 15m / 49.2ft. Bend radius is approximately 42mm (1.7in).

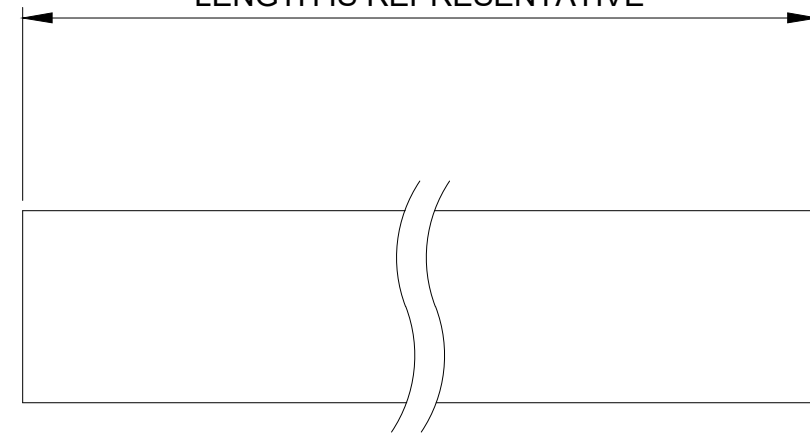
General	
Weight	2.60 lb (1.18 kg)
Max Pressure Tolerance @ 25°C	6kgf/cm ² (85psi)
Max Temperature Tolerance	80°C (176°F)
Hardness (Shore)	85A

Ø 1/2 in (13mm)




Ø 3/8 in (9.5mm)

LENGTH IS REPRESENTATIVE



Clear polyurethane

NO.	DESCRIPTION				MATER'L	QUANTITY	REMARKS
					UNIT	inch	APPAR
					SCALE	N/S	TITLE
DATE	BY	BY	BY	APPRD BY	3RD ANGLE		HOS-10X13PU-CL-XX
2026.05.11	SK.An				CODE NO.	DWG. NO.	