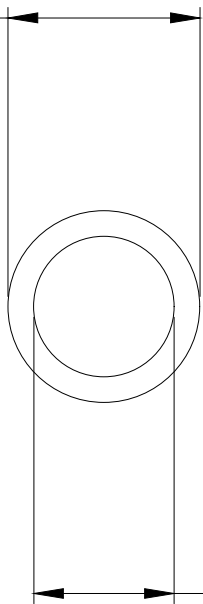




Koolance clear PVC tubing with 10mm (3/8in) internal diameter, 13mm (1/2in) external diameter. Bend radius is approximately 37mm (1.5in). This tubing is one roll of 100m (328ft).

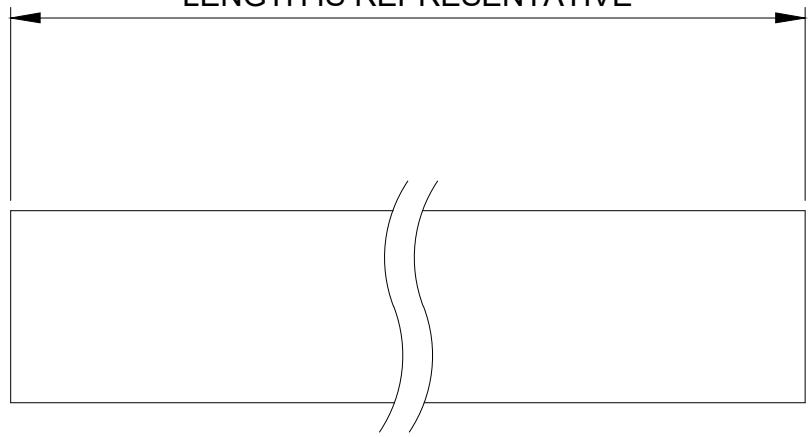
General	
Weight	15.40 lb (6.99 kg)
Max Pressure Tolerance @ 25°C	5kgf/cm2 (71psi)
Max Temperature Tolerance	70°C (158°F)
Hardness (Shore)	80A

Ø 1/2 in (12.7mm)




Ø 3/8 in (9.5mm)

LENGTH IS REPRESENTATIVE



Clear PVC

NO.	DESCRIPTION				MATER'L	QUANTITY	REMARKS
					UNIT	inch	APPAR
					SCALE	N/S	TITLE
DATE	BY	BY	BY	APPRD BY	3RD ANGLE		HOS-10CL-XX
2026.05.11	SK.An				CODE NO.	DWG. NO.	