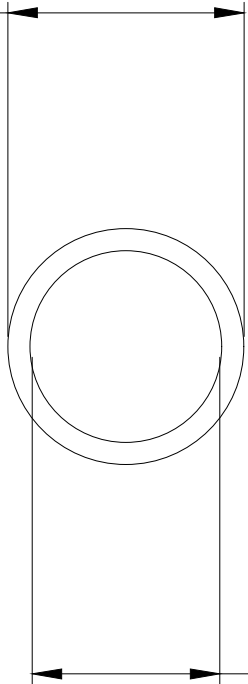




Koolance clear PVC with 13mm (1/2in) internal diameter, 16mm (5/8in) external diameter. Bend radius is approximately 55mm (2.2in). This tubing is one roll of 100m (328ft).

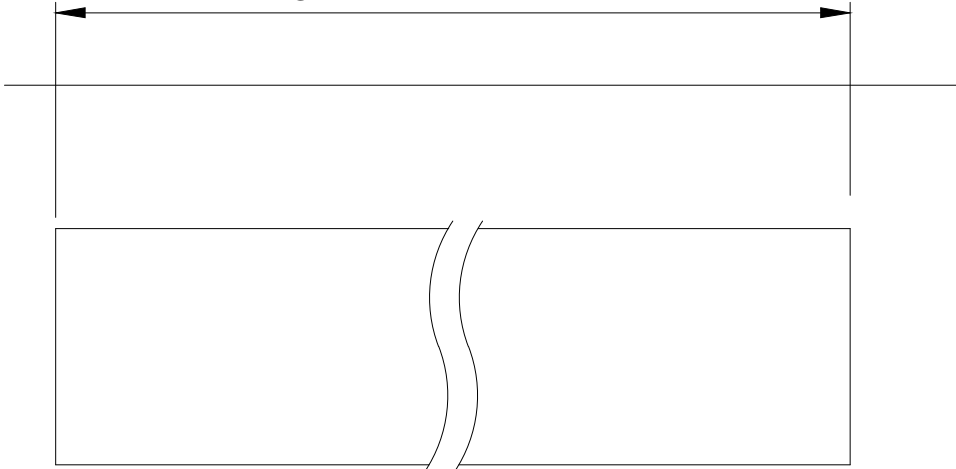
General	
Weight	20.40 lb (9.25 kg)
Max Pressure Tolerance @ 25°C	4kgf/cm <sup>2</sup> (57psi)
Max Temperature Tolerance	70°C (158°F)
Hardness (Shore)	75A

Ø 5/8 in(15.9mm)




Ø 1/2 in(12.7mm)

LENGTH IS REPRESENTATIVE



Clear PVC

NO.	DESCRIPTION				MATER'L		QUANTITY	REMARKS
					UNIT	inch	APPAR	
					SCALE	N/S	TITLE	
DATE	BY	BY	BY	APPRD BY	3RD ANGLE			HOS-13CL-XX
2026.05.11	SK.An				CODE NO.	DWG. NO.		