

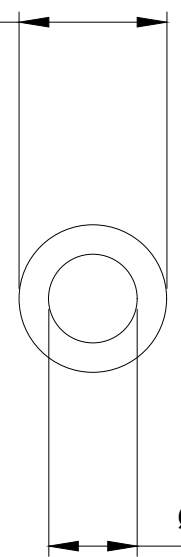
**Tubing Roll, PVC Clear, Dia: 06mm x 10mm
(1/4in x 3/8in) - [Length 100m / 328ft]**



Koolance clear PVC tubing with 6mm (1/4in) internal diameter, 10mm (3/8in) external diameter. Length 100m / 328ft. Bend radius is approximately 22mm (0.9in).

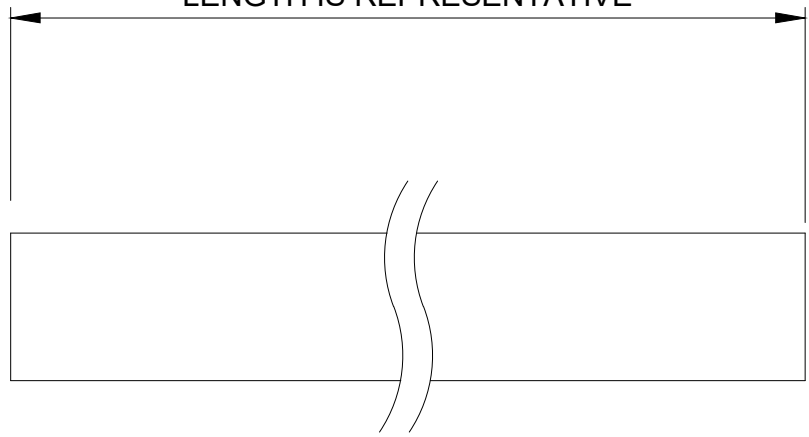
General	
Weight	20.00 lb (9.07 kg)
Max Pressure Tolerance @ 25°C	6kgf/cm ² (64psi)
Max Temperature Tolerance	70°C (158°F)
Hardness (Shore)	80A

Ø 3/8 in (9.5mm)




Ø 1/4 in (6.4mm)

LENGTH IS REPRESENTATIVE



Clear PVC

NO.	DESCRIPTION					MATER'L		QUANTITY	REMARKS
						UNIT	inch	APPAR	
						SCALE	N/S	TITLE	
DATE	BY	BY	BY	APPROD BY	3RD ANGLE		HOS-06CL-XX		
2026.05.11	SK.An				CODE NO.		DWG. NO.		