

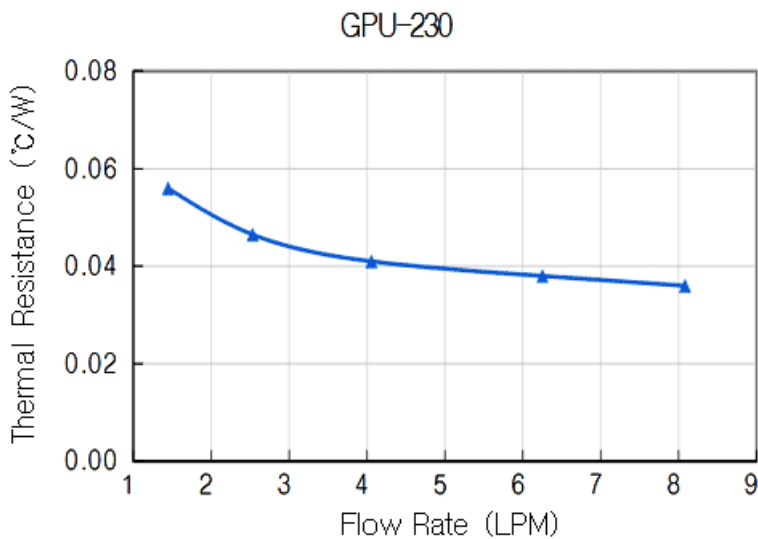
GPU-230 Cold Plate, 45mm x 45mm (1.8in x 1.8in)



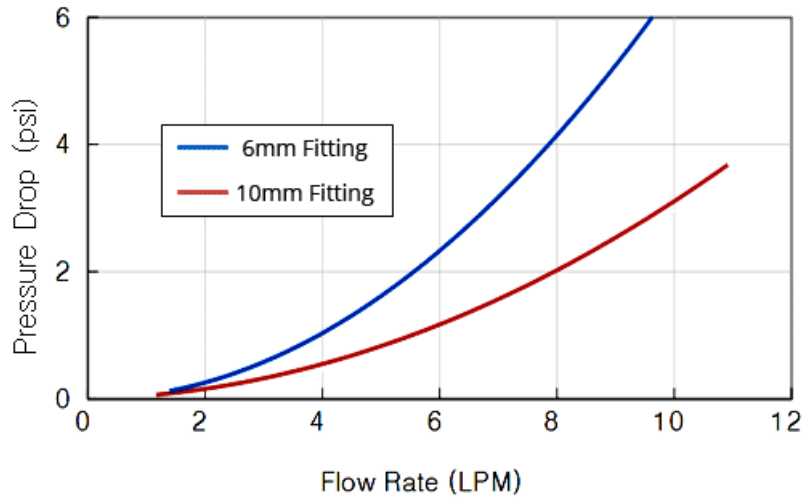
Koolance's best-performing "GPU Series" cold plate, the GPU-230 is a general-purpose water block with a 0.5mm microfin internal structure. The cooling area footprint is approximately 45mm x 45mm (1.8in x 1.8in).

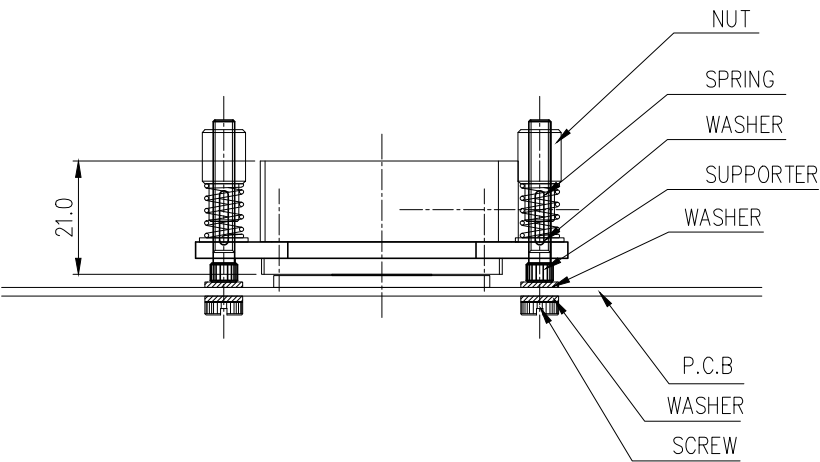
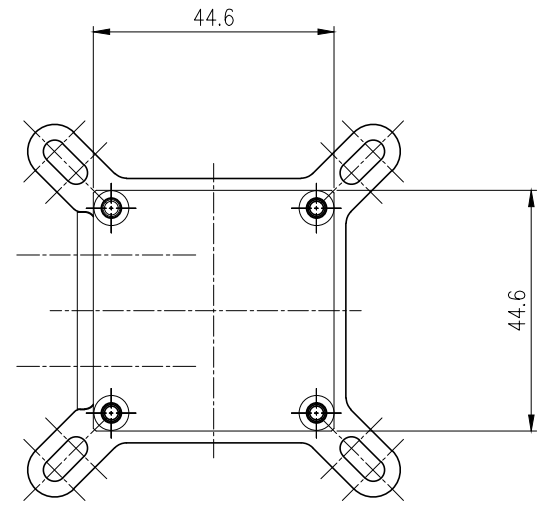
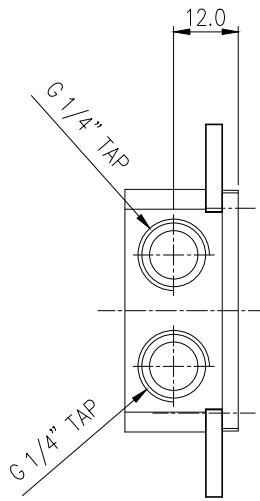
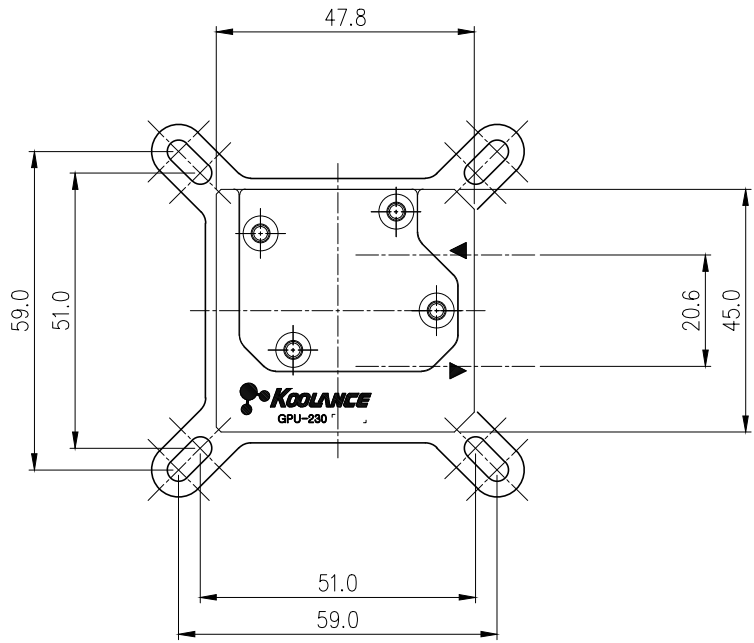
Materials include a copper cold plate, POM acetal top, anti-corrosive nickel plating, stainless steel, and EPDM o-rings. Works with G 1/4 BSPP (parallel) thread fittings. The supported diagonal hole distance supported by the mounting bracket is approximately 70-86mm.

Cold Plates	
Flow Resistance @ 5LPM (10-13mm ID)	0.056kgf/cm2 (0.8si)
Thermal Resistance @ 5LPM (Approx.)	0.04 °C/W
General	
Weight	0.63 lb (0.29 kg)
Fitting Thread	G 1/4 BSPP
Materials	Nickel-Plated Copper, POM Acetal, Stainless Steel, EPDM
Max Pressure @ 25 °C	10kgf/cm2 (142.2psi)
Max Temperature	100 °C (212 °F)



GPU-230





REV	DATE	CONTENTS	REVD BY	CHKD BY	APPD BY
		REVISION			

NO.	DESCRIPTION	MATER'L		QUANTITY	REMARKS
		UNIT	MM		
	KOOLANCE			APPAR	GPU-230
		SCALE	N/S	TITLE	Ass'y
DATE	BY	BY	BY	APPRO BY	
	S.J.LEE				REF. NO.
					DWG. NO.