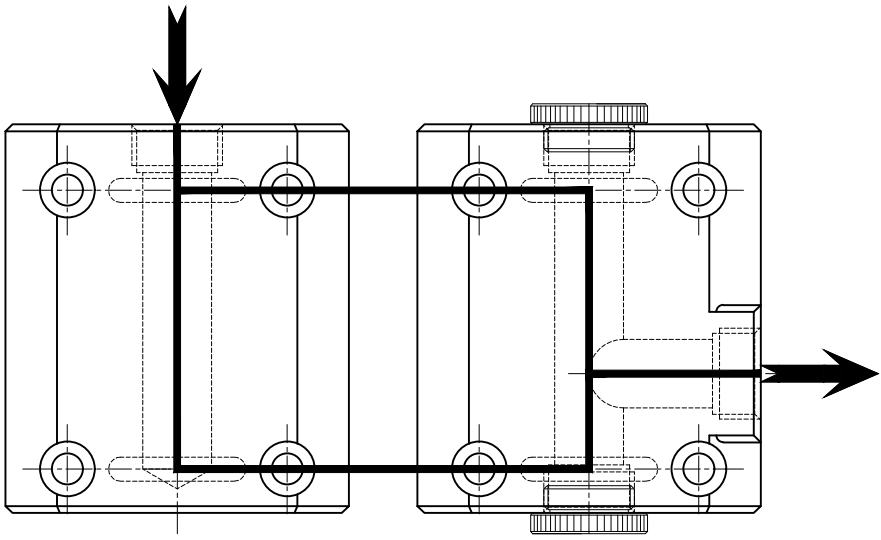
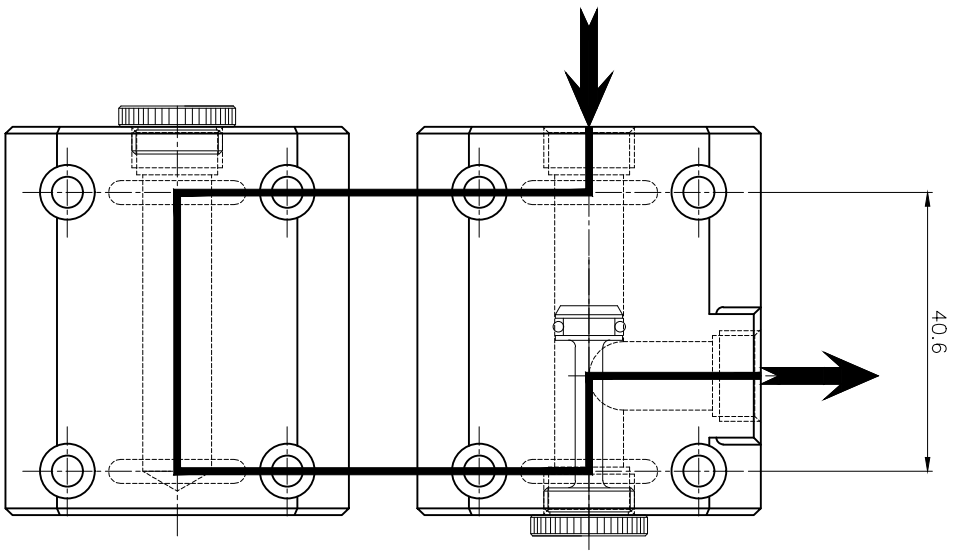




Koolance video bridge connectors link multiple video water blocks together with ease. Flow can be directed in series or parallel. CNT-VDB1 is for combining two (dual L-bracket) video blocks which are in consecutive PCI-Express slots. This product is only compatible with Koolance VID-series water blocks which have detachable fitting bases (launched in 2013 or later).

NOTE: Hose barbs are recommended for 10mm (3/8in) and 13mm (1/2in) ID tubing sizes to avoid conflicting with the water block or video card.

General	
Weight	0.44 lb (0.20 kg)
Fitting Thread	G 1/4 BSPP
Max Pressure Tolerance @ 25° C	2kgf/cm2 (28.5psi)
Max Temperature Tolerance	80° C (176° F)



* Dual Serial * Dual Parallel