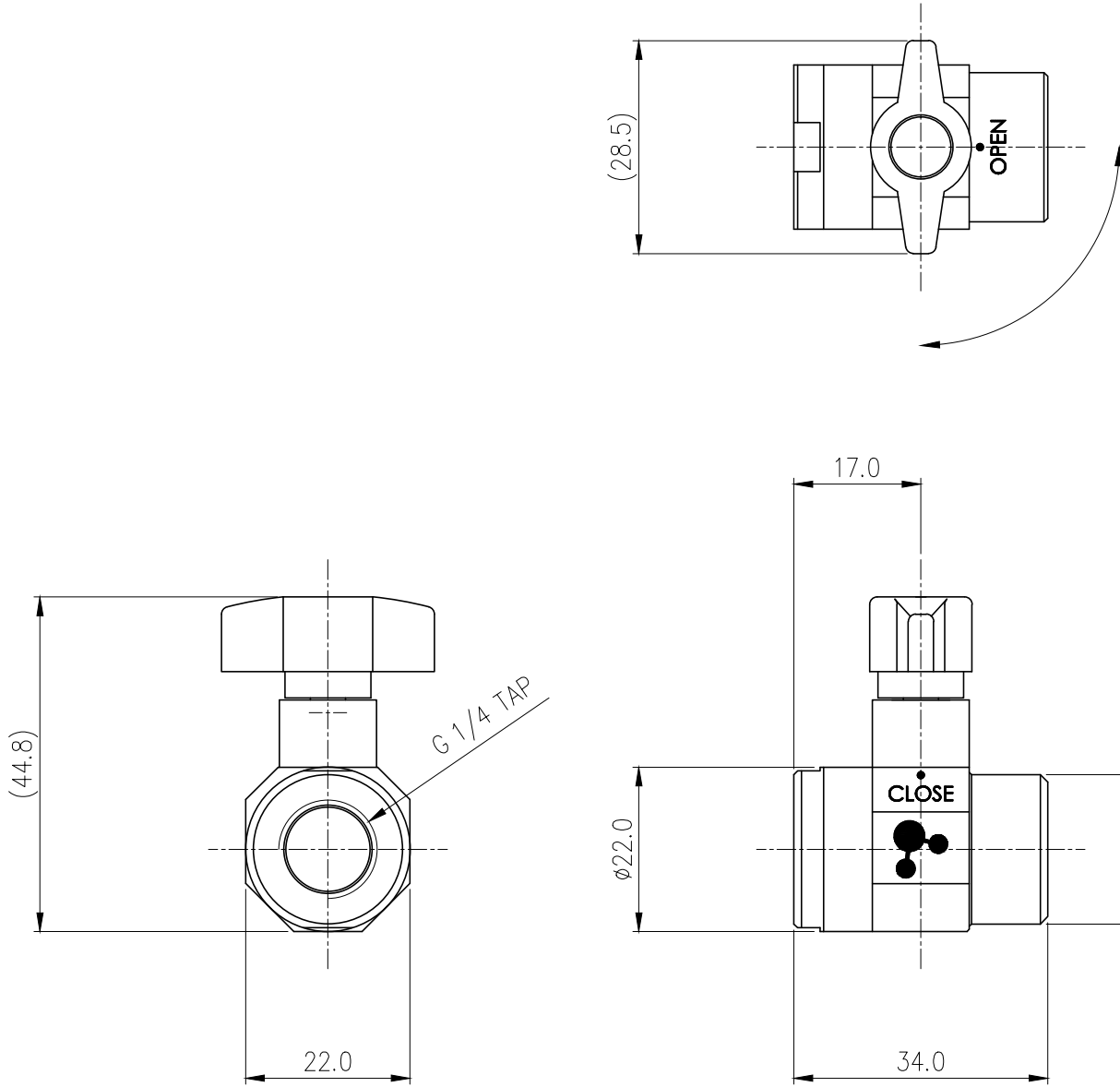





Manual ball valve for closing, opening, or partially restricting coolant flow. Nickel-plated brass, G 1/4 BSPP threading.

General	
Weight	0.19 lb (0.09 kg)
Fitting Thread	G 1/4 BSPP
Max Pressure Tolerance @ 25° C	10kgf/cm2 (142.2psi)
Max Temperature Tolerance	100° C (212° F)



NO.		DESCRIPTION				MATER'L		QUANTITY	REMARKS	
						UNIT	MM	ITEM VLV-BL1X2		
						SCALE	N/S	TITLE Ass'y		
						3RD ANGLE				
DATE		BY	BY	BY	APPRO BY	CODE NO.		DWG. NO.		PAGE
		S.J.LEE								

REV	DATE	CONTENTS	REVD BY	CHKD BY	APPD BY
REVISION					